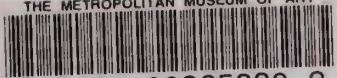


THE METROPOLITAN MUSEUM OF ART



3 0620 00365880 3

119.8

Pol

1927<sup>5</sup>

THE METROPOLITAN MUSEUM  
OF ART

THE LIBRARY



PRESENTED BY  
AMERICAN ART ASSOCIATION

.....57696.....





Digitized by the Internet Archive  
in 2014

<https://archive.org/details/spanishfrenchita00amer>

THE YAMANAKA COLLECTION



FREE PUBLIC EXHIBITION

From Saturday · April 9 Until Time of Sale  
Weekdays 9 to 6 · Sunday 2 to 5

UNRESTRICTED PUBLIC SALE

Saturday Afternoon · April 16 at 2:15 O'Clock



EXHIBITION & SALE AT THE  
**AMERICAN ART GALLERIES**

Madison Avenue · 56th to 57th Street  
New York City



SALES CONDUCTED BY  
Mr. O. Bernet and Mr. H. H. Parke  
American Art Association · Inc  
MANAGERS

1927





*Spanish · French & Italian*  
*Chinese and Japanese*  
TEXTILES

Embroideries · Velvet Hangings · Priests' Robes  
*No*-dance Costumes · Chasubles · Copes  
Decorated Screens · Silk Carpets



*Sold by Order of*  
*the Owner*  
Mr. Sadajiro Yamanaka

*Under Management of the*  
American Art Association  
INCORPORATED  
New York  
1927

# *Priced Catalogues*

*Priced copies of the catalogue, or any session thereof, will be furnished by the Association at charges commensurate with the duties involved in copying the necessary information from the records of the Association.*

**The AMERICAN ART ASSOCIATION · Inc**

*Designs its Catalogues  
and Directs All Details of Illustration  
Text and Typography*



# Conditions of Sale



1. **REJECTION OF BIDS.** Any bid which is not commensurate with the value of the article offered, or which is merely a nominal or fractional advance, may be rejected by the auctioneer if in his judgment such bid would be likely to affect the sale injuriously.
2. **THE BUYER.** The highest bidder shall be the buyer, and if any dispute arises between two or more bidders, the auctioneer shall either decide the same or put up for re-sale the lot so in dispute.
3. **IDENTIFICATION AND DEPOSIT BY BUYER.** The name of the buyer of each lot shall be given immediately on the sale thereof, and when so required, each buyer shall sign a card giving the lot number, amount for which sold, and his or her name and address. ¶ A deposit at the actual time of the sale shall be made of all or such part of the purchase prices as may be required. ¶ If the two foregoing conditions are not complied with, the lot or lots so purchased may at the option of the auctioneer be put up again and re-sold.
4. **RISK AFTER PURCHASE.** Title passes upon the fall of the auctioneer's hammer, and thereafter the property is at the purchaser's risk, and neither the consignor nor the Association is responsible for the loss of, or any damage to any article by theft, fire, breakage, however occasioned, or any other cause whatsoever.
5. **DELIVERY OF PURCHASES.** Delivery of any purchases will be made only upon payment of the total amount due for all purchases at the sale.
6. **RECEIPTED BILLS.** Goods will only be delivered on presentation of a receipted bill. A receipted bill presented by any person will be recognized and honored as an order by the buyer, directing the delivery to the bearer of the goods described thereon. If a receipted bill is lost before delivery of the property has been taken, the buyer should immediately notify the Association of such loss.
7. **STORAGE IN DEFAULT OF PROMPT PAYMENT AND CALLING FOR GOODS.** Articles not paid for in full and not called for by the purchaser or agent by noon of the day following that of the sale may be turned over by the Association to some carter to be carried to and stored in some warehouse until the time of the delivery therefrom to the purchaser, and the cost of such cartage and storage and any other charges will be charged against the purchaser and the risk of loss or damage occasioned by such removal or storage will be upon the purchaser. ¶ In any instance where the purchase bill has not been paid in full by noon of the day following that of the sale, the Association and the auctioneer reserve the right, any other stipulation in these conditions of sale notwithstanding, in respect to any or all lots included in the purchase bill, at its or his option, either to cancel the sale thereof or to re-sell the same at public or private sale without further notice for the account of the buyer and to hold the buyer responsible for any deficiency and all losses and expenses sustained in so doing.
8. **SHIPPING.** Shipping, boxing or wrapping of purchases is a business in which the Association is in no wise engaged, but the Association will, however,

afford to purchasers every facility for employing at current and reasonable rates carriers and packers; doing so, however, without any assumption of responsibility on its part for the acts and charges of the parties engaged for such service.

9. **GUARANTY.** The Association exercises great care to catalogue every lot correctly and endeavors therein and also at the actual time of the sale to point out any error, defect or imperfection, but guaranty is not made either by the owner or the Association of the correctness of the description, genuineness, authenticity or condition of any lot and no sale will be set aside on account of any incorrectness, error of cataloguing or imperfection not noted or pointed out. Every lot is sold "as is" and without recourse. ¶ Every lot is on public exhibition one or more days prior to its sale, and the Association will give consideration to the opinion of any trustworthy expert to the effect that any lot has been incorrectly catalogued and in its judgment may thereafter sell the lot as catalogued or make mention of the opinion of such expert, who thereby will become responsible for such damage as might result were his opinion without foundation.
10. **RECORDS.** The records of the auctioneer and the Association are in all cases to be considered final and the highest bid shall in all cases be accepted by both buyer and seller as the value against which all claims for losses or damage shall lie.
11. **BUYING ON ORDER.** Buying or bidding by the Association for responsible parties on orders transmitted to it by mail, telegraph, or telephone, if conditions permit, will be faithfully attended to without charge of commission. Any purchases so made will be subject to the foregoing conditions of sale, except that, in the event of a purchase of a lot of one or more books by or for a purchaser who has not through himself or his agent been present at the exhibition or sale, the Association will permit such lot to be returned within ten days from the date of sale, and the purchase money will be refunded, if the lot differs from its catalogue description. ¶ Orders for execution by the Association should be given with such clearness as to leave no room for misunderstanding. Not only should the lot number be given, but also the title, and bids should be stated to be so much for the lot, and when the lot consists of one or more volumes of books or objects of art, the bid per volume or piece should also be stated. If the one transmitting the order is unknown to the Association, a deposit must be sent or reference submitted. Shipping directions should also be given.

---

*These conditions of sale cannot be altered except by the  
auctioneer or by an officer of the Association*

OTTO BERNET · HIRAM H. PARKE · *Auctioneers*  
AMERICAN ART ASSOCIATION · INC  
*Managers*

# CATALOGUE



## INTRODUCTION

THE name Yamanaka has come to stand in New York for sterling qualities in Eastern ceramic art, and it has had such standing for many years, following an introduction through Japanese ceramics, whose popularity in this country came fast upon the opening of a new world to Americans after the Philadelphia Exposition of 1876. In the intervening years the American world of art lovers has learned that the Yamanakas have grown and developed as the years have unfolded and have continuously brought before the public admirable objects of art of many ages and many peoples. The present exhibition nevertheless will develop an unexpected array of beautiful objects, as Mr. Sadajiro Yamanaka has devoted a part of his time for the last several years to collecting European as well as Asiatic textiles and will display them at the American Art Galleries.

It is not saying too much—nor is it in disparagement of the many brilliant collections that have been displayed in these galleries—to say of the Yamanaka collection that it includes many prizes of the textile art, and many colorful feasts for the eye such as rarely come at public sale or at private exhibition before the eyes of the discriminating community. Design and fabric may be studied at will, but predominating will be found color, rapturously indulged in by the humble but artistic workmen of the textile world. The examples are too many for specification.

DANA H. CARROLL

New York, March, 1927





SALE AT THE AMERICAN ART GALLERIES  
THE YAMANAKA COLLECTION

APRIL 16, 1927



To save time and to prevent mistakes each purchaser will oblige the management by filling in this slip and handing it to the record clerk or sales attendant on making the first purchase.

*Purchaser's Name* \_\_\_\_\_

*Address in Full* \_\_\_\_\_

*Catalogue Number* \_\_\_\_\_

*Amount of Deposit* \_\_\_\_\_

AMERICAN ART ASSOCIATION · INC · *Managers*



## AFTERNOON SESSION

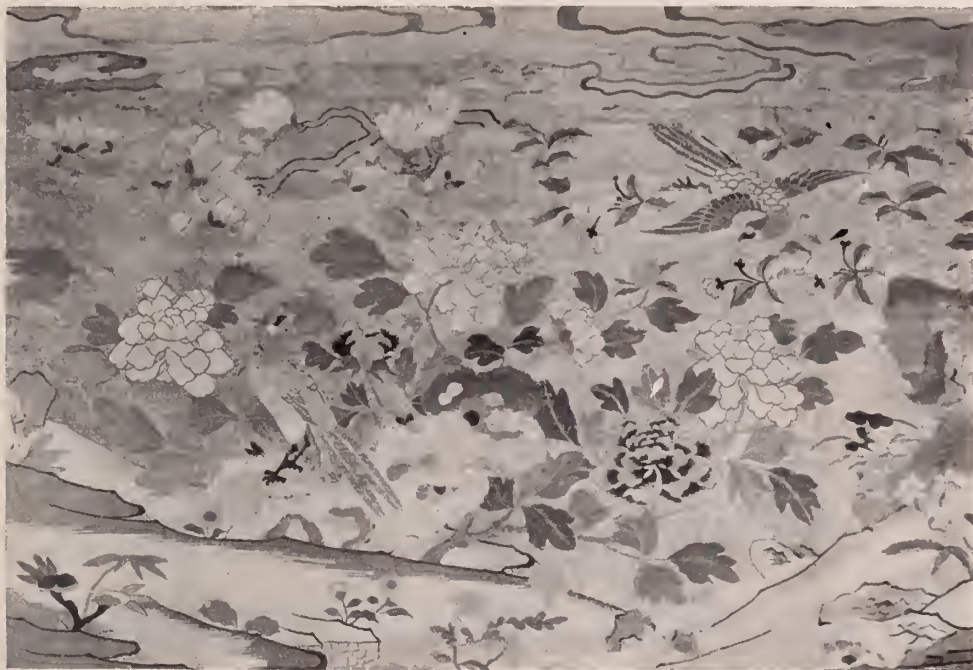
Saturday April 16, 1927 at 2:15 O'clock

*Catalogue Numbers 1 to 264 Inclusive*

---

1. CHINESE EMBROIDERED ARMREST *Ch'ien-lung*  
Embroidered with bats and cloud scrolls in soft colors on a dull pale yellow ground, the effect heightened by occasional Shou medallions in gold.  
*8½ inches*
2. CHINESE IMPERIAL BROCADE ARMREST *Ch'ien-lung*  
Ornamented in a lotus design of red and pale green on a ground of deep sapphire-blue, with occasional emphasis in white.  
*Height, 9 inches*
3. PAIR CHINESE VELVET CUSHIONS *Ch'ien-lung*  
Light wine-red velvet with a brilliant sheen, *semé* with small blossom sprays in emerald, white and light and dark red.  
*21½ inches square*
4. TAPESTRY PANEL, IN FRAME *Ch'ien-lung*  
Picturing a bird perched on a slender tree, and facing the left. Executed in black, pink and gray, on a gray-white ground.  
*Height, 11½ inches; width, 11½ inches*
5. CHINESE PAINTED LEATHER BAG *Ch'ien-lung*  
Ornamented with a small herd of the sacred spotted deer gamboling in a garden, in colors on a white ground, this scene surrounded by a key-fret border which sets it off from a ground of conventional floral design. On the flap are depicted four carriers.  
*Length, 24½ inches; depth, 17 inches*
6. MANDARIN LADY'S COAT OF VELVET BROCADE *K'ang-hsi*  
Beautiful peony design of small proportions in rich sapphire-blue cut velvet on a gold ground.  
*Length, 32 inches*

7. TWO CHINESE BROCADE FRAGMENTS *Ming*  
15. Imperial dragons in silks of old-gold on ground of rich and deep atmospheric blue, and red.  
*Length, 20 inches; width, 15 inches*
8. CHINESE TAPESTRY PANEL, IN CARVED FRAME *K'ang-hsi*  
25. A transverse picture, presenting in a horizontal line three baskets of flowers, in delicate colors on a dark-peach ground.  
*Height, 15¾ inches; length, 41¾ inches*
9. GOLD BROCADE PILLOW *Ch'ien-lung*  
20. Light emerald-green silk with a rich and extensive gold brocade pattern in gold, the whole in floral design.  
*Length, 23 inches; width, 21 inches*
10. CHINESE IMPERIAL BROCADE WALL HANGING *Ch'ien-lung*  
20. A massive elephant wrought in brownish gold wears a blanket displaying a Shou medallion and bears a vase on its back, the whole wrought on a brilliant ruby velvet ground. At the elephant's feet are the spotted stag and doe, and trees, bats and other conventionalities contribute additional light colors. Across the top a light emerald flap displaying conventional pendants.  
*Height, 33 inches; length, 37 inches*
11. CHINESE BROCADE TABLE COVER *Ch'ien-lung*  
30. Ornamented with large and small floral medallions in neutral colors on a light emerald-green ground.  
*Length, 36½ inches; width, 28 inches*
12. CHINESE DAMASK TABLE MAT *Ch'ien-lung*  
15. Decoration, storks flying among cloud and flower designs in soft colors on a light golden-brown ground.  
*Length, 36 inches; width, 28 inches*
13. CHINESE DAMASK REMNANT *Ming*  
20. Diaper pattern chiefly in blue on an imperial-yellow ground. Irregular in shape.  
*Length, 38 inches; width, 28 inches*



14. CHINESE TAPESTRY, FRAMED

*Ch'ien-lung*

190.

Picturing birds perched and flying, amid peonies and the lotus in blossom, and neighboring water pools. In brilliant silks on a gold ground.

*Height of frame, 26 inches; length, 36½ inches*

[See illustration]

15. CHINESE SILK MAT

*K'ang-hsi*

165.

Short, close and soft pile, with softly brilliant sheen. Rectilinear field of rich brown-red and silver-blue, patterned in swastika-fret and relieved by floral rosettes, within a fine border of swastika-fret in silver-blue and dull golden-yellow.

*Length, 38 inches; width, 36½ inches*

16. TIBETAN EMBROIDERY PANEL *Ch'ien-lung*

20. Pattern, a highly conventional floral scroll and lattice, wrought in gold and silver and picked out in silken threads of brilliant ruby sheen, the ruby elements appearing in enclosed bouquet-like designs.

*Length, 39 inches; width, 19 inches*

17. CHINESE EMBROIDERED PANEL, IN FRAME *K'ang-hsi*

15. Picturing the long-tailed bird and its mate on and approaching a branch of a tree in blossoms, with detached sprays and flying bats and butterflies circling about, all on a rich pink ground.

*Height, 32½ inches; width, 20¾ inches*

18. VELVET WALL HANGING *K'ang-hsi*

30. Conventional lotus decoration in light emerald on ruby ground of soft sheen.

*Length, 39½ inches; depth, 35 inches*

19. CHINESE TAPESTRY PANEL, IN FRAME *Ming*

20. On a grayish creamy ground a medallion effected in rich and deep sapphire-blue, represents a phoenix and a small bird perched on rocks at the base of peony, bamboo and peach trees.

*Height, 26½ inches; width, 15¾ inches*

20. CHINESE EMBROIDERED PANEL, IN FRAME *Ming*

12. At the base a table garden exhibiting a pine tree growing beside some rockery, and aloft a lotus cup and independent of it a quadrilateral bottle-shaped vase, worked in blue, peach and ivory on a brownish-white ground.

*Height, 26½ inches; width, 10¾ inches*

21. CHINESE VELVET HANGING *Ch'ien-lung*

140. Golden-yellow cut velvet with the design displayed in uncut velvet and representing Immortals amid landscape settings of fine elaboration.

*Height, 36 inches; length, 104 inches*



22. CHINESE EMBROIDERY PANEL, IN FRAME K'ang-hsi

15. At the upper left two butterflies appear, fluttering over extensive sprays of chrysanthemums which spring from the lower right. In rich and brilliant colors of soft tone, on a ground of cream-like silk.

*Height, 25½ inches; width, 15 inches*

23. CHINESE TAPESTRY PANEL, IN FRAME Ming

30. At the base on the right the sacred fungus grows, and from the left spring growths of graceful peonies, above which are fluttering butterflies. In light and soft tones on a soft sapphire-blue ground.

*Height, 28 inches; width, 13½ inches*

24. CHINESE IMPERIAL DAMASK TABLE COVER Ch'ien-lung

30. Wrought in a highly elaborated conventional floral pattern, in modest coloring, on a ground of imperial-yellow.

*Length, 39 inches; width, 27½ inches*

25. CHINESE EMBROIDERED PANEL, FRAMED K'ang-hsi

15. Picturing the "Nanten" fruit and a peony spray, conventionalized, in white, red and green, on a brownish white ground.

*Height, 35 inches; width, 15½ inches*

26. CHINESE EMBROIDERED TABLE COVER Ch'ien-lung

30. Embroidered with a large floral medallion surrounded by floral sprays, bats and medallions, in brilliant silks on a quilted golden-yellow ground. Narrow border of dark brownish brocade.

*Length, 42 inches; width, 25 inches*

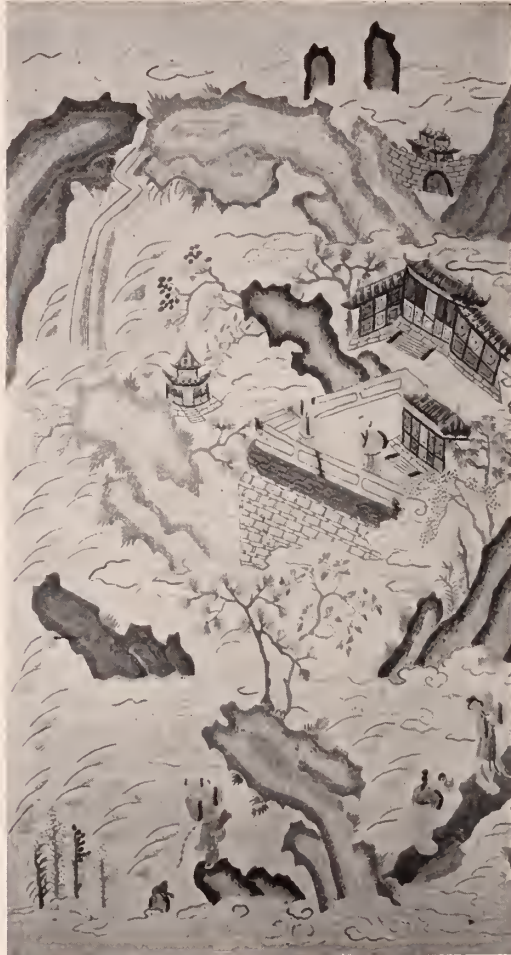
27. CHINESE EMBROIDERY PANEL, IN FRAME Ming

15. Full-length portrait of a dignitary, standing and facing the right, three-quarters front, with an attendant standing back of him and holding a fan over him, executed in blue, white and green on a peach-color ground.

*Height, 38½ inches; width, 16½ inches*

28. CHINESE LAMA ROBE Ming

70. Richly embroidered in silks and gold with mystical and symbolical designs on a brownish ground.



29. CHINESE EMBROIDERED PANEL

*Ming*

*Ho.* An elaborate landscape displaying a palace surrounded by its great park, with figures seen on a balcony and on the ground below, is worked in silks of several colors on a tan silk ground.

*Height of frame, 50 inches; width, 28¼ inches*

[See illustration]



30. CHINESE DAMASK WALL HANGING *Ch'ien-lung*

Decorative pattern; the dragon amid cloud forms above waves of the sea, all in soft colors with golden embellishment on a peach color ground.

*Height, 32 inches; length, 36 inches*

31. JAPANESE VELVET TABLE COVER

Deep sapphire-blue cut and uncut velvet with ornamentation of fish and dragon designs. Two wide conventional borders of dragon and floral scroll.

*Length, 50 inches; width, 48 inches*

32. FORMOSA BROCADE *About 1800*

Exhibiting refined conventional floral designs wrought in brilliant old-gold within a rich soft atmospheric blue.

*Length, 66 inches; width, 41 inches*

33. JAPANESE PRIEST'S ROBE OF BROCADE *Seventeenth Century*

Shimmering *bleu-de-ciel* silk with adornment in soft silver and golden colors, with occasional chromatic accents.

*Length, 72 inches; width, 41 inches*

34. JAPANESE PRIEST'S ROBE OF BROWN BROCADE *Eighteenth Century*

Ground of soft light brown, carrying a pattern of ingenious scrolls wrought chiefly in sapphire, gold and a light brown.

*Length, 72 inches; width, 43 inches*

35. JAPANESE GOLD BROCADE HANGING *Sixteenth Century*

Adorned with bold floral designs in gold on an apricot ground.

*Length, 71 inches; width, 27 inches*

36. JAPANESE PRIEST'S BROCADE ROBE *Eighteenth Century*

Silver-gray ground, adorned with finely designed floral sprays, involved with flying herons picked out in gold threads.

*Length, 72 inches; width, 45 inches*

---

---

Kindly read Conditions of Sale printed in forepart of Catalogue

---

---

37. JAPANESE PRIEST'S BROCADE ROBE *Sixteenth Century*  
35. Patterned in floral rosette and geometrical designs in silver and emerald-green on an apricot ground.  
*Length, 74 inches; width, 44 inches*
38. FORMOSA BROCADE *About 1800*  
35. Patterned with rosettes in ruby, orange, rose and golden-yellow, the interspaces occupied by angular scrolls, on a *bleu-de-ciel* ground.  
*Length, 75 inches; width, 42 inches*
39. JAPANESE PRIEST'S BROCADE ROBE *Eighteenth Century*  
35. Floral adornment with gold enhancement, in soft colors on a pale olive ground.  
*Length, 75 inches; width, 37½ inches*
40. FORMOSA BROCADE TABLE COVER *About 1800*  
35. Floral rosette and scroll pattern in golden-yellow on a sky-blue ground; at one end a deep swastika-scroll border in light blue on a deep sapphire-blue ground, between scroll borders of rose on a sky-blue ground, and at the opposite end ten borders of various design and colors.  
*Length, 78 inches; width, 51½ inches*
41. JAPANESE DAIMYO EMBROIDERY HANGING *Seventeenth Century*  
30. Quilted ground adorned in hexagonal design, in numerous soft and brilliant colors, interrupted by floral medallions, and the whole shimmering with chromatic lights.  
*Length, 80 inches; width, 37½ inches*
42. JAPANESE PRIEST'S GOLD BROCADE ROBE *Eighteenth Century*  
40. Gold brocade of floral design, dotted with conventional chrysanthemum medallions wrought in *bleu-de-ciel* silk.  
*Length, 80 inches; width, 42 inches*
43. JAPANESE BROCADE PRIEST'S ROBE *Eighteenth Century*  
40. Lotus-petal decoration in white, *bleu-de-ciel*, golden-yellow, and citron tones, enhanced with gold thread, on a soft purple ground.  
*Length, 80½ inches; width, 45 inches*

44. JAPANESE PRIEST'S SILVER BROCADE ROBE *Eighteenth Century*  
Sapphire-blue silk, made brilliant by a rosette and floral lattice design wrought in brilliant silver.

Length, 81 inches; width, 46 inches

45. JAPANESE PRIEST'S ROBE OF BROCADE *Eighteenth Century*  
Ingenious floral design in emerald, azure, and citron tones, enhanced by a generous use of gold, on an old-ivory ground.

Length, 82 inches; width, 44½ inches

46. JAPANESE EMBROIDERY LARGE WALL HANGING  
*Early Eighteenth Century*

On a quilted ground of rich peach tone the Japanese imperial crest is embroidered in numerous duplications, in sapphire, a light blue, green, white and golden-yellow, all glistening colors. Bordered with pale green brocade adorned in silvery-white.

Length, 83 inches; width, 83 inches

47. JAPANESE PRIEST'S ROBE OF BROCADE *Seventeenth Century*  
Soft old-rose ground, patterned in an ingeniously contrived lattice of floral medallions in neutral tones with the glint of jewels.

Length, 84 inches; width, 44½ inches

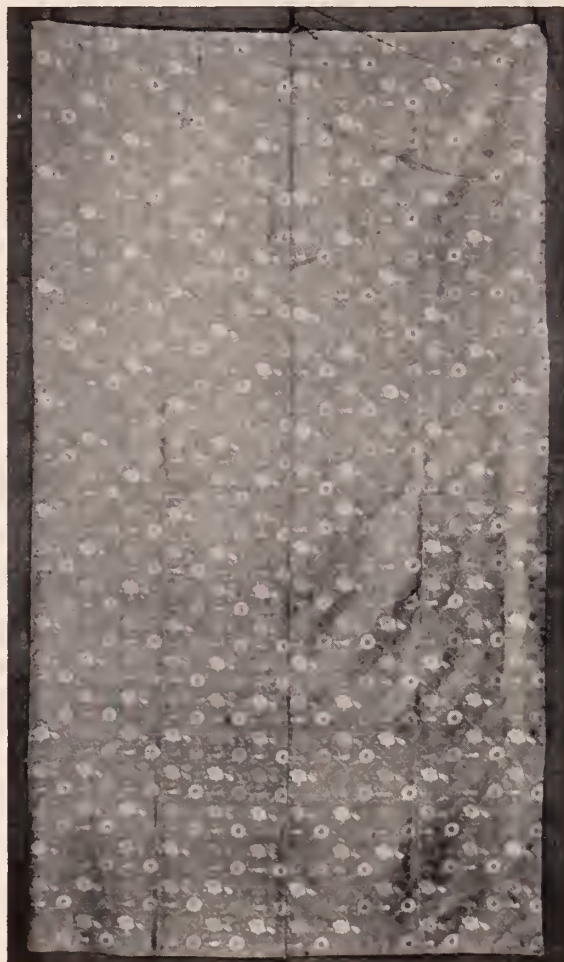
48. JAPANESE PRIEST'S BROCADE ROBE *Eighteenth Century*  
Fine floral design in soft silken colors, brightened by the lines of lattice-work in gold.

Length, 85 inches; width, 41½ inches

49. FORMOSA BROCADE TABLE COVER *About 1800*

A fabric of great richness in its color, and a restrained brilliancy. The field is a mass of ornamentation floral in its origin, wrought in a soft but brilliant ruby tone on a ground of soft golden-yellow. Crossed at either end by swastika borders in similar coloring, by a narrow border worked in emerald, and a wider one enclosing floral medallions wrought in a delicate amethystine tone.

Length, 97 inches; width, 60½ inches



50. JAPANESE BROCADE

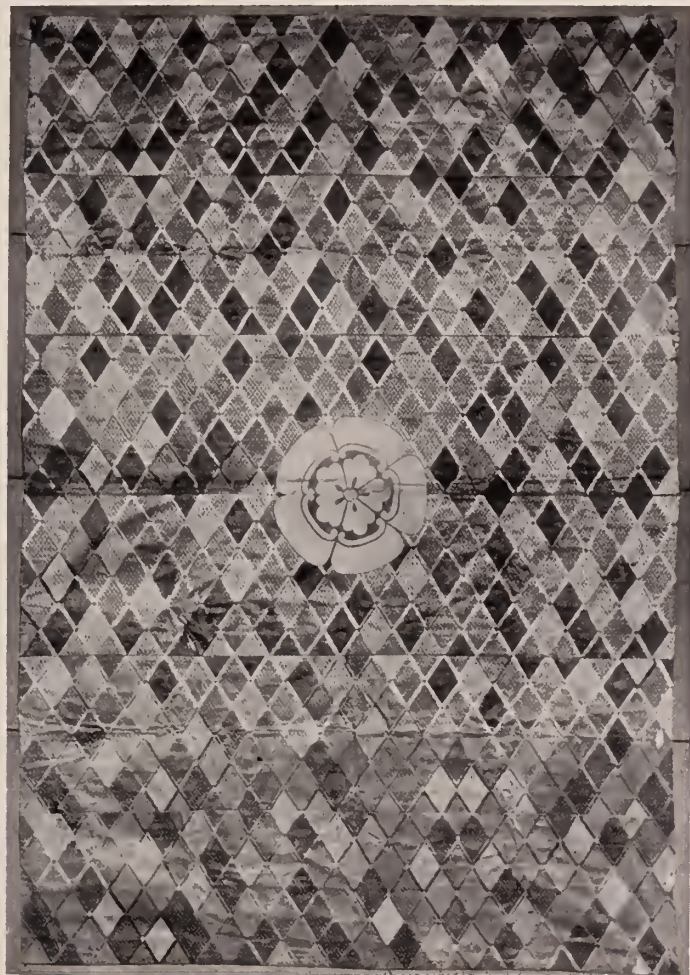
*Eighteenth Century*

100. ~~Lovely~~ floral scroll design wrought in a fair turquoise-blue, white and neutral tints, picked out with gold, on a lemon-yellow ground.

*Length, 94 inches; width, 53½ inches*

[See illustration]





51. JAPANESE GRAND WALL HANGING

*Eighteenth Century*

90.— Exquisite "Ezo-Nichiki" hand embroidery, a repetitive design of diamond-shaped figures, separated by narrow lines of solid color, each adorned with small stellate figures, the grounds a mass of brilliant and beautiful colors—turquoise-blue, golden-yellow, sapphire-blue and reddish peach-color and a delicate silvery green.

*Length, 96 inches; width, 66½ inches*

[See illustration]

52. JAPANESE PRIEST'S GOLD BROCADE ROBE XVIII Century

50. A brilliant fabric, with a gold fret ground interrupted by rosettes in the same metal, and overlaid at intervals with parallelograms of sapphire-blue silk adorned with metallic phoenixes involved in a cloud scroll. [Fresh from its preservation in a temple.]

Length, 106 inches; width, 48 inches

53. PAIR CHINESE TAPESTRY PANELS, FRAMED K'ang-hsi

150. Depicting storks flying high in the air above flourishing tree peonies, in exquisite soft colors, greenish and white, on a rich crimson ground.

Height, [each] 37½ inches; width, 20¾ inches

54. CHINESE BROCADE TABLE COVER Ch'ien-lung

25. Azure ornamentation of rich peony scroll on a peach-red ground. Dark blue brocade border.

Length, 40 inches; width, 30 inches

55. MANDARIN'S EMBROIDERED COAT Ch'ien-lung

50. Embroidered in colors and gold on a brilliant sapphire ground with imperial dragons among the clouds, and hovering butterflies.

56. CHINESE DAMASK WALL PANEL Ming

15. Peach-colored silk ground, interwoven with conventional patterns owing their origin to the conventional cloud-scroll, the whole design enlivened and enriched with a free sprinkling of Shou medallions wrought in gold threads.

Length, 40½ inches; width, 39 inches

57. CHINESE DAMASK TABLE COVER Ming

17.50 "Karako" design, picturing many Chinēse boys in various postures, amid symbols and branches of flowers, executed in various soft colors on a glistening citron ground. Crossed at the ends by fret borders.

Length, 42 inches; width, 27 inches

58. CHINESE EMBROIDERY PANEL, FRAMED Ming  
 Bunshose, god of literature, depicted at full-length and running, under the light of a constellation. Done in golden-yellow and light turquoise-blue, enhanced by gold threads, on a rich and deep sapphire-blue ground.

50.

*Height, 44½ inches; width, 25 inches*

59. CHINESE PAINTED LEATHER HANGING K'ang-hsi  
 Peacocks and lesser birds painted in soft colors on a white ground, the surroundings peonies and other flowers. Fret borders and a top border of bats among the clouds.

50.

*Height, 21 inches; length, 77 inches*

60. CHINESE VELVET TABLE COVER Ch'ien-lung  
 Golden-yellow cut velvet with the design in uncut velvet exhibiting a wide border of dragon-scroll surrounding a field of similar motive.

35.

*Length, 50 inches; width, 49 inches*

61. CHINESE BROCADE TABLE COVER Ch'ien-lung  
 Of quatrefoil design, with a ruby field embracing dragons in gold, emerald and white, surrounded by a narrow border of sapphire-blue.

15.

*Diameter, 52 inches*

62. CHINESE IMPERIAL BROCADE TABLE COVER Ch'ien-lung  
 On blue ground of swastika fret pattern, floral and fruit clusters in light blue, apricot, and ruby.

45.

*Length, 55 inches; width, 55 inches*

63. JAPANESE TAKEYAMACHI GAUZE NO-DANCER'S COSTUME XVII Century  
 Ornamented with cloud designs in gold.

40.

*Length, 57 inches*

64. JAPANESE NO-DANCE COSTUME XVII Century  
 Nichiki embroidery; a brilliant fabric, embroidered in rich and glistening silks of sapphire, old-gold, white, light emerald, peach and apricot and ruby tones on grounds of rose and *blen-de-ciel*.

130.

*Length, 47 inches*



65. TWO CHINESE EMBROIDERED PANELS, SEPARATELY FRAMED

*Ming*

40. Depicting figures engaged in examining a scroll, others looking down from a balcony, and two ladies admiring the fish in a fishbowl. Embroidered in bright colors on tan silk ground, with painted details.

*Height of frame, 55 inches; width, 22 inches*

[See illustration]



66. FRENCH EMBROIDERED STRIP XVIII Century

10. Floral decoration in brilliant colors, in bands of white and pale sea-green ground.

*Length, 50 inches; width, 18 inches*

67. FRENCH BROCADE WALL HANGING XVIII Century

30. Displaying bold floral designs of delicate color on a white ground.

*Length, 81½ inches; width, 37½ inches*

68. ITALIAN EMBROIDERY XVIII Century

10. An ecclesiastical hood of white silk, embroidered in colors with vines and blossoms. Silken border of floral design.

*Length, 19 inches*

69. FRENCH VELVET CHAIR SEAT XVIII Century

15. Exhibiting a rich and extensive conventional floral ornamentation in cut and uncut ruby velvet on a ground of old-gold

*Diameter, 22 inches*

70. SMALL VELVET PANEL French, XVIII Century

22. Expansive flowers in conventional designs appear in cut velvet with lovely *bleu-de-ciel* sheen on a ribbed ground which retains vestiges of its original quality when it was worked in gold.

*Length, 26½ inches; width, 20 inches*

71. FRENCH EMBROIDERY XVIII Century

15. Irregularly shaped panel of white silk, embroidered in rich colors with floral designs in broad and narrow stripes.

*Length, 34 inches; width, 27 inches*

72. FRENCH DAMASK TABLE COVER XVII Century

15. Made after Persian designs of human figures, animals and flowers, in grayish relief on an amethystine ground. Narrow formal borders.

*Length, 38½ inches; width, 25½ inches*



73. JAPANESE EMBROIDERED NO-DANCE COSTUME *XVII Century*

350.- Embroidered in gold and silken colors with the brilliancy of jewels  
on a rose ground with a representation of a bed of conventional  
chrysanthemums supported on a fence of bamboo.

*Length, 63 inches*

[See illustration]



74. JAPANESE NO-DANCE EMBROIDERED COSTUME *XVII Century*

275  
A resplendent fabric of rich colors, the embroideries beautifully worked.— The designs are floral, including vases holding large bouquets, on grounds white, red and silver, and the flowers are of varied nature.

[See illustration]

- Pass*  
75. THREE DUTCH SILK GAUZE EMBROIDERED TABLE MATS XVIII Century

— Decoration of birds and floral designs in soft colors with black ground. [Slightly torn.]

*Length, [each] 46 inches; width, 21 inches*

76. DUTCH EMBROIDERED TABLE COVER XVIII Century

*7.50* Embroidered in bold floral designs in worsted on linen, the colors white and yellow-brown.

*Length, 51 inches; width, 38 inches*

- Pass*  
77. PAIR BULGARIAN JUTE CHAIR SEATS XVIII Century

— Conventional laminated pattern in blue on a white ground which exhibits a characteristic floral medallion in reserve.

*Diameter, 22 inches*

78. SCUTARI VELVET MAT

*7.50* Conventional flame medallion at centre and quarter-medallions at the four corners, surrounded by a diamond-shaped fret-medallion border, all in purple cut velvet on an écru jute ground.

*Length, 45 inches; width, 20½ inches*

79. TWO DUTCH SAMPLERS Early XIX Century

*10.* Birds, animals, trees and the human figure worked in soft silken colors on linen and surrounded by a floral scroll border.

*Length, 18 inches; width, 12 inches*

80. TWO DUTCH GAUZE PANELS XVIII Century

*12.50* Ornamental rosettes in rose and green on white ground, in openwork of lace effect.

*Length, 9½ inches; width, 24 inches*

81. VELVET TABLE MAT Italian, XVIII Century

*15.* Velvet of *gris souris* embroidered with floral designs in numerous colors. Edged with gold galloon.

*Length, 34½ inches; width, 29 inches*





82. CAUCASIAN WOOLEN TABLE COVER

XVIII Century

50. Wine-red field supporting wide-spread ornamentation mainly geometric in character, including a stepped medallion outlined in light color. Broad conventional border of ivory note.

Length, 62 inches; width, 45 inches

[See illustration]

---

---

Kindly read Conditions of Sale printed in forepart of Catalogue

---

---

83. DUTCH SAMPLER XVIII Century

10. Embroidered in silks on linen with letters of the alphabet, geometrical and floral designs of varied character, and the date 1708.

*Height, 12 inches; length, 27½ inches*

84. TWO SCUTARI VELVET MATS XVIII Century

15. Within a wavy double border a double-pointed medallion of arboreal design, surrounded by smaller medallions and formal floral corners, all in sapphire-blue velvet on a ground of linen color.

*Length, 37 inches; width, 20 inches*

85. DUTCH VELVET CHAIR SEAT XVIII Century

5. Embossed with a graceful floral design in soft golden-yellow with a silvery gray sheen.

*Length, 18 inches; width, 16 inches*

86. DUTCH BROCADE XVIII Century

5. Patterned with lanceolate leaves, tulips and floral rosettes, wrought in bronze hue on an old-golden ground.

*Length, 31 inches; width, 30 inches*

87. PAIR KOREAN EMBROIDERY PANELS IN FRAMES XV Century

30. Picturing woodpeckers and other birds perched in trees, worked in rich colors on light ground

*Height, 30¾ inches; width, 14¼ inches*

88. KOREAN EMBROIDERY PANEL IN FRAME XIII Century

25. Picturing phoenixes on a blossoming peach tree, embroidered in colors on a light ground

*Height, 34¾ inches; width, 15 inches*

89. TURKISH SILK AND METAL BROCADE XVII Century

17.50 Woven in conventional geometric and floral patterns in quiet colors on a dark blue-green ground.

*Length, 35 inches; width, 32½ inches*

90. TWO SCUTARI VELVET MATS XVIII Century

15. Conventional decoration within serrate borders, in turquoise-blue and sapphire-blue respectively, on linen-colored ground.

*Lengths, 36 and 45 inches; width, 20 inches*

91. ITALIAN VELVET AND GOLD EMBROIDERY PANEL

XVIII Century

15. Alternate lines of floral design in amethystine velvet and gold embroidery on a white silk ground.

Length, 61 inches; width, 16 inches

92. ITALIAN EMBROIDERED TABLE COVER

XVIII Century

40. Embroidered in longitudinal stripes, broad and narrow, with designs angular and of Asiatic animalistic origin, on crimson and blue grounds with alternating stripes of grayish white.

Length, 81 inches; width, 55 inches

93. ITALIAN EMBROIDERED TABLE COVER

XVIII Century

45. Bold floral designs embroidered in colored silks and gold on a ground of silver thread. Deep border of gold galloon.

Length, 60 inches; width, 53 inches

[See illustration below]



---

---

Kindly read Conditions of Sale printed in forepart of Catalogue

---

---

94. CAUCASIAN WOOLEN TABLE COVER XVIII Century

60. The latch-hook design is freely used in the ornamentation, varying forms of it appearing in the field and borders, the ground of the field being wine-red and that of the borders white.

Length,  $56\frac{1}{2}$  inches; width,  $40\frac{1}{2}$  inches

95. ITALIAN EMBROIDERED TABLE COVER XVIII Century

15. Embroidered with conventional floral designs in simple colors on a soft red ground. [Slightly torn.]

Length, 82 inches; width, 46 inches

96. DUTCH EMBROIDERED TABLE COVER XVIII Century

12.50 Formal floral and geometrical devices embroidered in worsteds of soft coloring on linen.

Length, 51 inches; width, 37 inches

97. DUTCH EMBROIDERED BROCADE TABLE COVER XVIII Century

12.50 Decoration, a quatrefoil lattice *appliqué* on lace ground, the colors crimson, golden-yellow and gray-white.

Length, 65 inches; width,  $32\frac{1}{2}$  inches

98. DUTCH EMBROIDERED TABLE COVER XVIII Century

Decorated in parallel stripes with simple conventional motives, in quiet colors on a greenish ground. Worsted fringe border.

Length, 53 inches; width, 42 inches

99. TWO SPANISH BROCADE MATS XVIII Century

15. In gold, silver, and softly colored silks, worked in conventional floral designs on rose-brown and white ground. Narrow gold lace border.

Length,  $17\frac{1}{2}$  inches; width, 12 inches

100. CHILD'S CAPE OF SPANISH EMBROIDERY XVIII Century

12.50 White silk brocade embroidered in silks of many rich colors with resplendent bouquets of large and small flowers.

Length, 25 inches



101. SPANISH EMBROIDERY

XVIII Century

5. Rich decoration of floral forms embroidered in colored silks and silver thread on a white brocade ground. [Slightly torn.]

Length, 33 inches; width, 30 inches

102. SPANISH GOLD AND SILVER BROCADE SKIRT

Mid-XVIII Century

25. Embellished with rich embroidery in silks and displaying flowers and conventional designs in various colors on a white ribbed ground. Lace edging.

103. SPANISH BROCADE VESTMENT

Third Quarter XVIII Century

30. Trimmed with silk galloon of the color of old-gold. Brilliant floriated patterns of large dimensions relieved by white.

104. SPANISH EMBROIDERED TABLE COVER

XVIII Century

32. 50 Embroidered with graceful sprays of blossoms in a variety of soft colors, on a ground of soft grayish white.

Length, 69 inches; width, 61½ inches

105. SILVER EMBROIDERED SILK BROCADE CHASUBLE

Spanish, about 1770

20. On a patterned ivory ground, bordered and paneled in gold galloon, flowers and leaf designs of varied shapes are embroidered in silver threads.

106. EMBROIDERED BROCADE LUNETTE PANEL

Spanish, about 1775

17. 50 Light écru ground patterned in brocade floral designs, and embroidered with bouquets of roses and other flowers in silks of various colors.

107. EMBROIDERED DAMASK COPE

Spanish, about 1770

30. Embroidered with flower branches in softly glowing silks on a rubble ground of silvery white silk brocade relieved by narrow bars of *bleu-de-ciel*.



108. SPANISH DALMATIC

*Last Half XVIII Century*

27.50

White damask with an embroidery pattern of floral scrolls in garnet tones, the whole bordered and paneled in narrow strips of old-golden galloon.

[See illustration]



109. SPANISH DALMATIC

*Third Quarter XVIII Century*

50. White silk paneled and bound in gold galloon, and embroidered in glistening silks of rich color with birds and sprays of flowers.

[See illustration]

---

---

Kindly read Conditions of Sale printed in forepart of Catalogue

---

---

110. SPANISH BROCADE CHASUBLE XVIII Century

20. Rose ground interrupted by a highly conventional flower and fruit ornamentation in silvery white. Bordered and paneled in silk galloon of old-golden hue.

111. SPANISH EMBROIDERED PORTIÈRE XVIII Century

15. Embroidered with rich and glistening silks of many colors on a net ground, the designs being floral, set within and connecting geometrical figures, and the net ground being white. Three sides bordered with tasseled fringe.

*Length, 6 feet 3 inches; width, 5 feet 7 inches*

112. SPANISH EMBROIDERY PANEL About 1770

15. Lunette-shaped, richly embroidered with roses and other flowers in soft coloring on a brocade ground of soft white.

*Length, 66 inches*

113. SPANISH EMBROIDERED CHASUBLE Third Quarter XVIII Century

22.<sup>50</sup> Bound and paneled in gold galloon. White silk ground, resplendent in gold, silver and varicolored silk embroideries displaying a glistening variety of floral forms.

114. SPANISH EMBROIDERED BROCADE HANGING About 1770

27.<sup>50</sup> Embroidered with detached floral sprays in dark colors on a fine brocade ground of rose and white.

*Length, 6 feet 7 inches; width, 5 feet 5 inches*

115. SPANISH EMBROIDERED BROCADE DALMATIAC About 1770

22.<sup>50</sup> Breast, back and shoulder plates of white silk embellished with interwoven silver threads, and embroidered with floral sprays of silk, the pendent skirts all around displaying floral sprays of many colors on a reddish citron ground. Panels bounded by broad and narrow bands of gold galloon.

116. SPANISH BROCADE COPE *XVIII Century*

20. Rich and highly elaborated ornamentation of enchaind floral sprays in many brilliant colors and gold on a white brocade ground.

*Spread, 70 inches*

117. EMBROIDERED PRIEST'S ROBE *Spanish, about 1770*

30. White silk dalmatic, embroidered with floral sprays in naturalistic coloring; apparels in green, with floral ornamentation in silver and gold. Trimmed with gold galloon.

118. SPANISH BROCADE TABLE COVER *XVIII Century*

25. Large baskets of flowers and fruit reserved in white within a brocade ground of light emerald.

*Length, 73 inches; width, 37½ inches*

119. SPANISH EMBROIDERED WALL HANGING *About 1770*

17.50 Embossed ground with various spiral reserves, the whole embroidered in colors both delicate and pronounced, with spiral displays of rich floral designs. Embellished with gold galloon.

*Length, 5 feet 3 inches; width, 43 inches*

120. SPANISH EMBROIDERY WALL HANGING *Mid-XVIII Century*

35. A valance paneled in golden-silk galloon with silk fringe, the decorations floral and arboreal and wrought in softly brilliant colors on a white ribbed ground.

*Height, 40½ inches; length, 6 feet 5 inches*

121. CHASUBLE OF SPANISH EMBROIDERY *Early XVIII Century*

15. Embroidered with displays of flowers in richly colored silks on a white silk ground, the embroidery enriched by liberal displays of gold thread.

122. SPANISH BROCADE ROBE *Third Quarter XVIII Century*

20. Silvery white ground patterned in floral design and ornamented with a multiplicity of blossoms on branches embroidered in silks of numerous quiet colors.



---

---

*Kindly read Conditions of Sale printed in forepart of Catalogue*

---

---

123. SPANISH BROCADE WALL HANGING *XVIII Century*

17.<sup>50</sup> Luxuriant display of fruits and flowers in various delicate colors on a cream-white ground.

*Length, 80 inches; width, 37 inches*

124. SPANISH BROCADE COPE *Third Quarter XVIII Century*

42.<sup>50</sup> Silvery white ground illuminated by a variety of floral patterns in emerald, rose and old-gold. Hood in rich rose, with a double border of old-golden silk galloon, and displaying a complexity of floral patterns in rich color.

125. SPANISH BROCADE STRIP *XVIII Century*

12.<sup>50</sup> Highly conventional floral ornamentation in old-rose and silvery white.

*Length, 84 inches; width, 28 inches*

126. SPANISH DAMASK TABLE COVER *XVIII Century*

12.<sup>50</sup> Patterned in rose stripes adorned with floral sprays in silvery white, alternating with wide stripes of emerald-green bearing similar ornamentation.

*Length, 84 inches; width, 40 inches*

127. SPANISH EMBROIDERED WALL HANGING *XVIII Century*

12.<sup>50</sup> Paneled in gold galloon. Embroidered in a variety of colors on a white striped ground with a variety of graceful floral sprays.

*Height, 38½ inches; length, 61 inches*

128. EMBROIDERED BROCADE COPE *Spanish, Third Quarter Eighteenth Century*

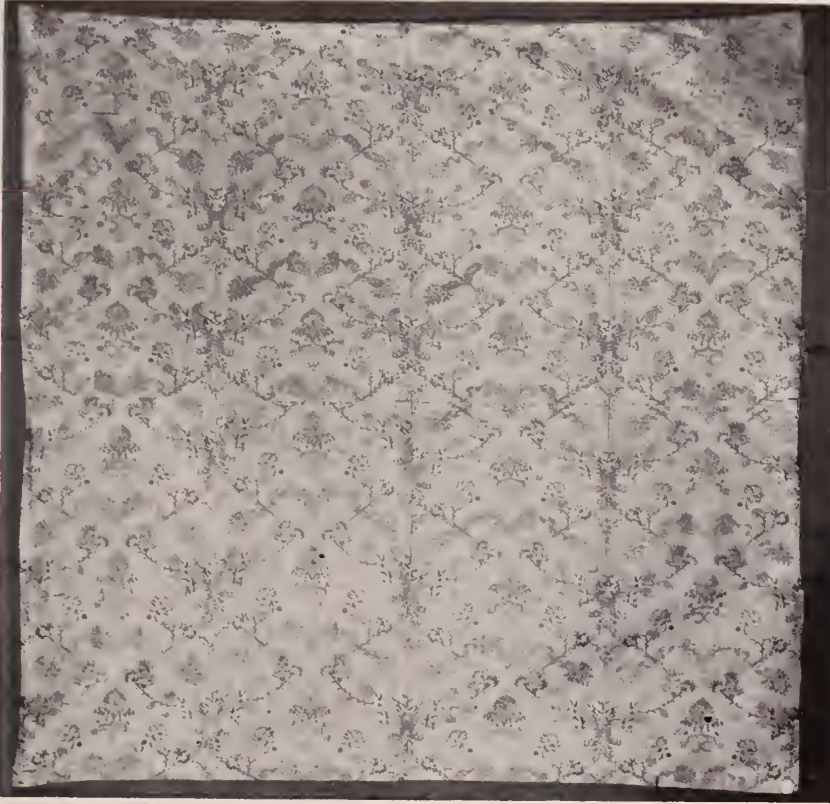
12.<sup>50</sup> The ground of soft gray-white exhibits a brocade design of floral pattern and is embroidered in silks of ruby and emerald with flowing leaf scrolls which are further embellished with bold details wrought in mellowed gold and silver thread. The tulip pattern is conspicuous in the design.

129. SPANISH BROCADE TABLE COVER

*Eighteenth Century*

15. Luxuriant floral sprays in colors of soft brilliancy on a white ground, the decoration arranged in broad longitudinal bands separated by narrow lines.

*Length, 66 inches; width, 47 inches*



130. SPANISH EMBROIDERED WALL HANGING

*About 1770*

30. On a white silk ground, a rich variety of floral designs embroidered in soft colors with a brilliant enrichment of gold, the whole a quiet harmony of color.

*Length, 7 feet 1 inch; width, 6 feet 11 inches*

[See illustration]



131. CAUCASIAN WOOLEN TABLE COVER

37.50



No. 132

XVIII Century

Pale crimson ground, carrying a multiplied decoration of individual geometric figures effected in various colors with a generous use of white. Fringed ends.

Length, 80 inches; width, 73 inches

132. CAUCASIAN COTTON TABLE COVER

35.00

XVIII Century

Decorated in transverse bands with various animal and bird designs and at the centre an area of geometrical figures, effected in various light colors on grounds of red and dark-blue. Fringed ends.

Length, 97 inches; width, 48½ inches

[See illustration]

133. SPANISH BROCADE TABLE COVER Last Half

17.50

XVIII Century

Sinuous designs, of tree trunks and flower stems, with blossoms wrought in white and a rich blue on a mellow ivory ground.

Length, 6 feet 3 inches; width, 5 feet 2 inches

134. CHINESE DAMASK WALL HANGING

60.00

Ch'ien-lung

"Karako" design of the "hundred boys", in various soft colors on an emerald ground. Borders at top and bottom of fret and dragon scroll, and near the top a deep band of medallion ornamentation embellished with gold.

Height, 7 feet 4 inches; width, 4 feet 7 inches



135. EMBROIDERED WHITE SILK CHASUBLE *Spanish, about 1770*

50  
2. Branches of blossoming flowers are embroidered in rich silks of many colors and embellished with embroideries in gold, on a ground of soft gray-white. Bordered and paneled in gold galloon.

[See illustration]



136. SPANISH EMBROIDERED COPE

*XVIII Century*

35. White ribbed silk, richly embellished in a warmth of color heightened by gold, with baskets of flowers and waving floral branches, the designs varied and displaying an artistic and individual grace of drawing.

[See illustration]

137. SPANISH BROCADE COPE WITH HOOD *About 1770*

50  
2. Fruit, flowers, geometrical designs and other conventional figures appear in silvery white on a rose-pink ground.

138. SPANISH EMBROIDERED PANEL *XVIII Century*

15 On a white ground crossed by narrow segmental bars in blue, abundant and graceful sprays of blossoms are embroidered in rich and brilliant harmonious colors.

*Length, 85 inches; width, 37½ inches*

139. SPANISH EMBROIDERY PANEL *XVIII Century*

20 Varied floral designs in softly brilliant colors on an écru ground.

*Length, 66 inches; width, 53 inches*

140. EMBROIDERED TABLE COVER *Spanish, XVIII Century*

20 Decoration in golden-yellow and silver-white on a cream-white brocade ground, with intricate floral designs. Bordered with golden-yellow silk galloon lace.

*Length, 85 inches; width, 62 inches*

141. SPANISH GOLD BROCADE COPE *About 1770*

25 Design of rich exuberance wrought in gold on a white silk brocaded ground and displaying a variety of graceful floral patterns.

142. SPANISH EMBROIDERED CHASUBLE *About 1770*

30 Adornment, a brocaded floral pattern of rich exuberance in a variety of soft and glistening colors on a soft rose red ground.

143. SPANISH EMBROIDERY WALL HANGING *Third Quarter XVIII Century*

10 Sprays of roses and other flowers embroidered in soft colors on an ivory ground. Lower border of silver fringe.

*Height, 23 inches; length, 82 inches*





144. SPANISH EMBROIDERED BROCADE DALMATIC

*Last Half XVIII Century*

27.<sup>50</sup> Ornamented in complex designs of floral, bird and geometrical origin wrought chiefly in rose and green on a silvery white satin ground.

[See illustration]

145. EMBROIDERED BROCADE DALMATIC *Spanish, about 1770*

27.50 Extensively adorned in floral pattern, including leaves and blossoms of various form, wrought in a variety of pleasant colors on a ground of white ribbed silk.

146. SPANISH BROCADE WALL HANGING *Last Half XVIII Century*

100.5 Bold and varied floral and fruit designs, with conventional floral baskets, wrought in silvery white within a ground of delicate rose.  
*Length, 6 feet 3 inches; width, 6 feet 1 inch*

147. EMBROIDERED BROCADE ALTAR FRONTAL *Spanish, about 1770*

35.5 Silk brocade with conventional floral patterns, embroidered in silks of soft color embellished with gold thread, on an old-white ground, with extensive branches of many-colored blossoms. Bordered with silk galloon of old-golden hue.  
*Length, 81 inches; width, 40 inches*

148. SPANISH EMBROIDERED TABLE COVER *XVIII Century*

27.50 Floral ornamentation in golden-yellow and a variety of soft tones on a rose-brown ground. [One corner slightly torn.]  
*Length, 98 inches; width, 38 inches*

149. SPANISH ALTAR FRONTAL *Third Quarter XVIII Century*

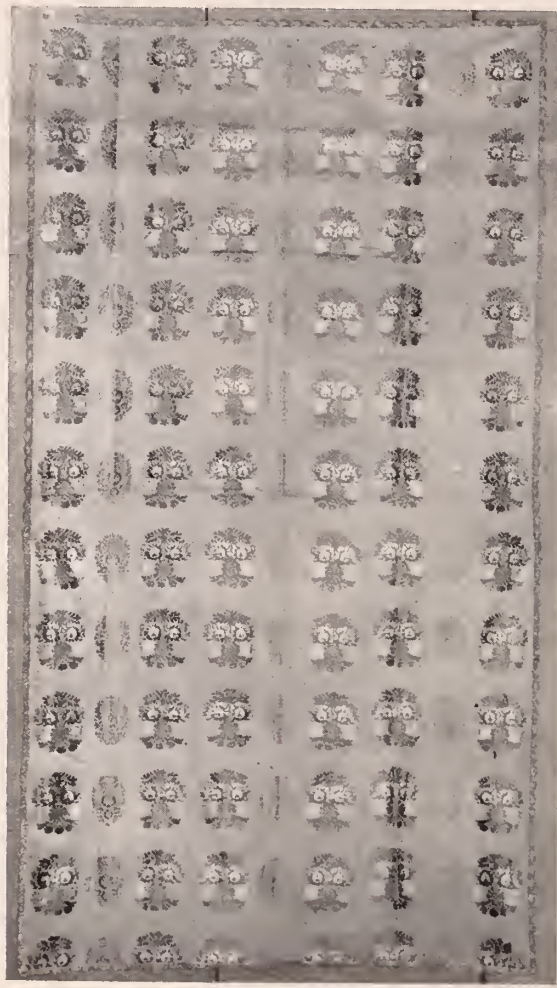
15.5 Bordered and paneled with silver and gold galloon. Rich brocade exhibiting expansive floral patterns in soft colors on a light ground, the colors largely a subdued rose and old-gold.  
*Height, 32½ inches; length, 90 inches*

150. SPANISH BROCADE TABLE COVER *Third Quarter XVIII Century*

22.50 Patterned with liliform flowers of a warm citron hue on a silvery white ground. Edged with silk fringe of silvery emerald tone.  
*Length, 91 inches; width, 74 inches*

151. ANTIQUE SPANISH EMBROIDERED TABLE STRIP *XVIII Century*

12.50 Floral sprays in rich soft colors of varied tones on an écru ground of silk brocade.  
*Length, 84 inches; width, 21 inches*



152. SPANISH EMBROIDERED TABLE COVER

*Third Quarter XVIII Century*

50.

Edged with gold and silver fringe. Brocade ground of pale rose, richly embroidered in silks of old-gold and various soft colors with handsome medallions of floral design.

*Length, 90 inches; width, 49 inches*

[See illustration]



153. SPANISH EMBROIDERED WALL  
HANGING XVIII Century

15. Graceful sprays of flowers embroidered in brilliant colors on a soft white ground. Lower edge in part fringed.

Length, 110 inches; width, 27½ inches

154. BROCADE CHASUBLE Spanish, about 1700

17.50 Decoration, an interesting and inveigling complexity of floral designs in numerous soft colors on a reddish peach toned ground of fine silk. A lovely production.

155. SPANISH EMBROIDERED SILK PANEL About 1775

12.50 Baskets of blossoms and serpentine scrolls of plants in flower, embroidered in various soft colors on an écreu ground of ribbed silk.

Length, 110 inches; width, 21 inches

[See illustration]



No. 155



156. SPANISH DAMASK DALMATIC

*About 1700*

*25.* Brocade design of leafage, buds and fruits reserved in white on a soft pink ground. A very rich but modest effect.

[See illustration]

157. SPANISH EMBROIDERY COPE

*About 1770*

*25.* Ornamentation, sprays of small blossoms, and vinery, embroidered on a rich white brocade.

*Spread, 105 inches*

[See illustration]



No. 157. SPANISH EMBROIDERY COPE

*Kindly read Conditions of Sale printed in forepart of Catalogue*

158. SPANISH EMBROIDERED WALL HANGING *XVIII Century*

15.— Decorated in vertical panels of bold floral sprays embroidered in rich colors on a brocade ground of rose hue adorned in white.

*Height, 37½ inches; length, 111½ inches*

159. SPANISH EMBROIDERY WALL HANGING *XVIII Century*

— *out*  
Embroidered with rich and plentiful bouquets of flowers in bold colors on a rose ground of fine brocade.

*Length, 122 inches; width, 38½ inches*

160. SPANISH EMBROIDERY *XVIII Century*

20.— In narrow vertical panels embroidered with narrow vertical sprays, alternating with narrower vertical stripes of floral design, in a white ground of cross-ribbed brocade.

*Length, 76 inches; width, 62½ inches*

161. SPANISH EMBROIDERED CHIASUBLE *About 1700*

25.— Ornamentation, various flowers on graceful curling stems, embroidered in gold and silver threads and variously colored silks on a white silk ground. A rich and brilliant effect.

162. SPANISH EMBROIDERY PANEL *Third Quarter XVIII Century*

12.—<sup>50</sup> Floral designs in sweeping scrolls and with large blossom displays are embroidered in neutral silks on a grayish ground of brocade.

*Length, 14 feet; width, 21½ inches*

163. ITALIAN VELVET *XVIII Century*

35.— Monochrome olive-green, with brilliant sheen.

*Length, 15 feet 8 inches; width, 36 inches*

164. CHINESE DAMASK TABLE COVER *Ch'ien-lung*

30.— Decoration, geometrical figures with floral and traditional details, in a variety of colors on an olive ground.

*Length, 56 inches; width, 29 inches*



165. CHINESE PAINTED  
LEATHER HANGING

65.

*K'ang-hsi*

Vases of flowers, birds and *kylins* are painted in bold colors in five panels, the whole surrounded by fret borders and displaying at the top a border of bats among the clouds.

*Height, 18 inches; length, 70 inches*

166. SET OF FOUR CHINESE SILK  
BROCADE WALL HANG-  
INGS

200.

*Ch'ien-lung*

Panels displaying the dragon, dragon scroll, floral and geometrical conventions and the dog-*Fu*, wrought in rich but quiet colors on a brilliant ground of soft red.

*Length, [each] 59 inches; width, 20 inches*

[See illustration]

167. PAIR VELVET WALL  
HANGINGS

50.

*K'ang-hsi*

Delicate wine-red velvet with a soft and light sheen, bearing a conventional lotus decoration in medallions and scrolls executed in light turquoise and a soft sapphire-blue.

*Length, 61 inches; width, 20½ inches*



No. 166

168. CHINESE DAMASK TABLE COVER

Ming

15. Ground of swastika-fret in blue on silver-white, interrupted by quadrilateral and circular medallions in silver-white and golden-yellow.

Length, 61 inches; width, 46 inches

169. CHINESE VELVET TABLE COVER

Ch'ieu-lung

30. Cut and uncut golden-yellow velvet, displaying in a quadrilateral field boldly designed scrolled figures about a conventionalized medallion centre, surrounded by a narrow floral scroll border and a wider outer border of dragon scroll.

Length, 50 inches; width, 48½ inches

170. CHINESE BROCADE TABLE COVER

K'ang-hsi

15. Patterned with foliated medallions formed of *ju-i* figures in blue outline on a rose ground of fret design.

Length, 62 inches; width, 27 inches

171. PAIR CHINESE EMBROIDERED BROCADE PANELS

Ch'ieu-lung

35. On a golden ground wrought in a swastika fret pattern are figures of vases and floral sprays in the effect of embroidery.

Height, 64 inches; width, [each] 18 inches

172. INDIAN AND CHINESE BROCADE PRIEST'S ROBE XVIII Century

22. 50. Composed of various sections of brocade of different colors and exhibiting variety of floral and geometrical designs.

173. CHINESE SILK BROCADE TABLE COVER

Ch'ieu-lung

95. Decoration a lattice design formed of freely used sceptre heads enclosing blossoms, the whole sprinkled with small floral medallions. Wrought in many colors on a golden-yellow ground.

Length, 5 feet 7 inches; width, 3 feet 10 inches

174. CHINESE DAMASK

Ming

50. On a shimmering ground of rich greenish blue is displayed a highly conventionalized and refined lotus design, wrought in a variety of soft colors.

Length, 72 inches; width, 29 inches

175. CHINESE BROCADE TABLE COVER *Ch'ien-lung*  
 Floral medallion design in silver, white and emerald on a rose-pink ground.

*Length, 73 inches; width, 52½ inches*

176. CRIMEAN EMBROIDERED TABLE MAT  
 Embroidered with conventional floral and geometrical designs in red, green and blue silk and gold, on a light brownish canvas ground. Fringed ends.

*Length, 54 inches; width, 17 inches*

177. CHINESE IMPERIAL BROCADE TABLE COVER *Ch'ien-lung*  
 Ground of gold and light golden-yellow, exhibiting a closely interwoven design with ruby illumination picturing among other elements various rosettes and geometrical figures.

*Length, 64 inches; width, 28 inches*

178. CHINESE EMBROIDERY PANEL *K'ang-hsi*  
 Pheasants and the tree peony embroidered in soft and rich colors and gold on a ground of tan silk gauze.

*Height, 50 inches; width, 26 inches*

179. CHINESE BROCADE TABLE COVER *Ch'ien-lung*  
 Rose field ornamented in chrysanthemum design in silvery blue; at each end six broad and narrow borders in rose, blue, old-gold and amethyst.

*Length, 68 inches; width, 56½ inches*

180. PAIR CHINESE SILK BROCADE TABLE STRIPS *Ch'ien-lung*  
 At one end a pair of the dogs-Fu at play with the brocaded ball, at the opposite end a highly conventional dragon panel, and in the field between them floral medallions and a lattice design, wrought in soft colors on a golden-yellow ground.

*Length, 70 inches; width, 22 inches*



---

---

Kindly read Conditions of Sale printed in forepart of Catalogue

---

---

181. CHINESE DAMASK

*Ch'ieu-lung*

20. Varied floral designs in medallion and quadrilateral figures, in varied softly brilliant colors on a vague silvery blue ground.

*Length, 61 inches; width, 46 inches*

182. CHINESE PAINTED LEATHER HANGING

*K'ang-hsi*

200. At the centre a long horizontal panel picturing figures variously occupied in houses and gardens. This is surrounded by flying phoenixes and large floral sprays. At top and sides narrow borders and at the bottom a wide border. The whole executed in rich and bold colors on a white ground.

*Height, 6 feet; length, 8 feet 2 inches*

183. CHINESE IMPERIAL BROCADE TABLE COVER

*Ch'ieu-lung*

25. Chrysanthemum scroll in sapphire-blue, emerald, pale turquoise-blue and golden-yellow on a creamy white ground patterned in swastika fret.

*Length, 71 inches; width, 23½ inches*

184. CHINESE BROCADE HANGING

*Ch'ieu-lung*

70. Luminous ground of soft grayish Nile-green, *semé* with floral sprays in quiet colors. At the ends, scroll and fret borders in harmonious colors.

*Length, 71 inches; width, 56½ inches*

185. CHINESE EMBROIDERED TABLE COVER

*Ch'ieu-lung*

22. 50 Flying phoenixes and butterflies, among peach and flower clusters, and large composite medallions, in silver thread and various soft colors on a rich deep blue ground of heavy gauze.

*Length, 78½ inches; width, 54 inches*

186. PERSIAN EMBROIDERY TABLE STRIP

*XVIII Century*

27. 50 Embroidered in blue worsted on creamy white cotton with stags and lions and birds.

*Length, 78 inches; width, 20 inches*



187. TURKISH BROCADE TABLE COVER

*130* In alternate longitudinal stripes of ruby, emerald and white, all decorated in gold with varying floral devices.

*Length, 50 inches; width, 34 inches*

[See illustration]

---

Kindly read Conditions of Sale printed in forepart of Catalogue

---

188. PERSIAN RUG

XVIII Century

40. A fabric with a multiplicity of borders, mainly conventional in design and in dark colors, enclosing a field which displays conventional birds, animals, and other decorative devices.

Length, 6 feet 3 inches; width, 4 feet 5 inches

189. CHINESE SILK BROCADE PANEL

K'ang-hsi

30. Ornamentation, conventional floral designs in varicolored bands on a soft red ground. At either end, six borders of floral, swastika and dragon scroll design in various colors on the same ground.

Length, 6 feet 3 inches; width, 27 inches

190. CHINESE DAMASK STRIP

Ch'ien-lung

20. Wrought in a lattice pattern of crossed and hexagonal designs, with small circular pinning, in brown, two shades of blue, and green on a rose ground.

Length, 70 inches; width, 28 inches

191. SET OF EIGHT CHINESE BROCADE WALL HANGINGS

Ch'ien-lung

300. Conventional design with a pendant at the top and pair of playful dogs-Fu at the bottom, the field between them occupied by a broad floral lattice design and conventional floral medallions, all expressed in luminous colors on a rich dark blue ground.

Length, 71½ inches; width, 22½ inches

192. SET OF FOUR CHINESE TAPESTRY PANELS, INDIVIDUALLY  
FRAMED

K'ang-hsi

220. On one, up-springing branches of trees and flowers, a bird, and butterflies flying, in blue-green, white and yellow on a peach color ground. Another shows at base, a peach tree in bearing, and a stork just taking flight; at top a pine tree, with a butterfly seen above it. In blue, green, rose and white on a peach-pink ground. A third shows pine and peach tree branches intermingled, with the chrysanthemum and the bush bamboo appearing lower down, executed in tones of blue, green and white on a peach-color ground. The fourth exhibits a peach tree in blossom and a Buddha's-hand citron, fruit, and birds singing on the branches, in yellow, white, green and blue on peach-color ground.

Height, each, [with frame] 73½ inches; width, 22½ inches

[See illustration]



No. 192. SET OF FOUR CHINESE TAPESTRY PANELS,  
INDIVIDUALLY FRAMED





193. CHINESE EMBROIDERED FIRE SCREEN

*Ch'ien-lung*

35. The phoenix and peony, and flying bats, in brilliant colors on a red ground. Ming carved lacquer frame displaying birds, figures and flowers in relief, with gilding.

*Height, 40 inches; width, 38½ inches*

[See illustration]

194. MANDARIN'S EMBROIDERED COAT *Ch'ien-lung*

50. On a brilliant sapphire-blue ground imperial dragons appear among conventional clouds above waves of the sea, and butterflies flutter among them.

195. CHINESE BROCADE TABLE COVER *Ch'ien-lung*

50. Decorated with conventional butterflies and various detached blossoms and blossom medallions, amid tendril scrolls, wrought in quiet colors on a brilliant emerald-green ground. At the ends, series of fret and scroll borders.

*Length, 6 feet 2 inches; width, 28½ inches*

196. CHINESE VELVET HANGING *Ch'ien-lung*

65. Cut and uncut ruby and emerald velvet, exhibiting a design of bats and lightning, within a border of swastika fret.

*Length, 78½ inches; width, 57½ inches*

197. CHINESE BROCADE TABLE COVER *Ch'ien-lung*

50. Peony designs artistically wrought in silks and metal on a ground of soft red. Transverse borders of fret, swastika and scroll design.

*Length, 80 inches; width, 53 inches*

198. VERY RARE CHINESE MING BROCADE ROBE *XIV Century*

35. Fine floral brocade in silver and old-gold on a dark orange ground.

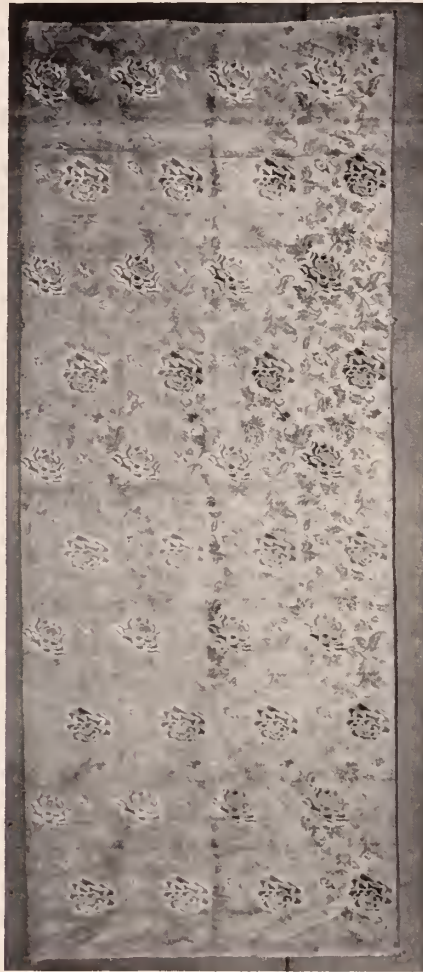
*Length, 80 inches; width, 45 inches*

199. CHINESE BROCADE PANEL *XVI Century*

50. Found in Formosa. Ornamented with rosettes and other floral figures executed in various glistening colors on a pinkish orange ground.

*Length, 73 inches; width, 42½ inches*





200. CHINESE DAMASK WALL PANEL

*Ch'ien-lung*

55. Rich and luxuriant peony designs wrought in soft red, yellow and other colors on a light emerald ground.

*Length, 73½ inches; width, 29½ inches*

[See illustration]



201. CHINESE DAMASK TABLE COVER

*Ch'ien-lung*

60. Bold peony designs executed with fine precision in a variety of harmonious colors on a light reddish ground. Transverse borders of fret and floral scroll.

*Length, 84 inches; width, 54 inches*

[See illustration]



202. MANDARIN'S EMBROIDERED COAT

*K'ang-hsi*

80.— Light chocolate-brown ground embroidered in vari-colored silks and gold with imperial dragons among cloud and flower scrolls and butterflies above waves of the sea.

[See illustration]





203. MANDARIN'S GOLD TAPESTRY COAT

*K'ang-hsi*

Soft golden ground, with tapestried design of imperial dragons and flying bats involved in a lotus scroll of fine design.

[See illustration]

204. CHINESE EMBROIDERED WALL HANGING

*Ch'ien-lung*

25. —  
Decoration, distinguished person-  
ages, attended, observing boys at  
play among garden flowers. Em-  
broidered in brilliant silks on a  
peach-pink ground.

*Length, 69 inches; width, 57 inches*



No. 205

205. CHINESE TAPESTRY PANEL,

100. — FRAMED

*Ch'ien-lung*

In the foreground the spotted stag  
is seen gazing up at the tree peony,  
and in the background a stork cir-  
cles about a peach tree in bearing.  
In the middle distance are chrysan-  
themum bushes over which a bat is  
winging. In lively colors before a  
sky-blue background.

*Height of frame, 79 inches; width, 25 inches*

[See illustration]

206. CHINESE TWO-FOLD EMBROIDERED

130. — SCREEN

*Ming*

On one fold are herons about a lotus  
pond in blossom, and on the other  
are depicted the bush bamboo and  
other plants, and a pair of birds.  
All in rich and bright colors on a  
brilliant sky-blue ground.

*Height, 78½ inches; width  
of fold, 28 inches*

[See illustration]





No. 206. CHINESE TWO-FOLD EMBROIDERED SCREEN



207. CHINESE EMBROIDERED WALL HANGING

*Ch'ien-lung*

100. Embroidered in silks of various colors, and gold threads, with a phoenix, a bat, the endless-knot and other symbols, and conventional clouds, on a satin ground of soft rose-red.

*Length, 6 feet 8 inches; width, 5 feet 3 inches*

[See illustration]

208. CHINESE EMBROIDERED FOUR-FOLD SCREEN *Ch'ien-lung*

50. Embroidered with various sprays and butterflies in rich and brilliant colors on a light ground.

*Height, 70 inches; panel width, 18 inches*

209. CHINESE BROCADE PANEL *Ch'ien-lung*

35. Ornamented in rich peony pattern wrought in soft harmonious colors, embellished with gold, on a ground of soft emerald-green.

*Length, 69 inches; width, 28 inches*

210. SET OF SIX CHINESE BROCADE WALL HANGINGS *Ch'ien-lung*

220. At one end an architectural pendant suspended from dragons, and at the opposite end a panel exhibiting two dogs-*Fu* sporting with the brocaded ball. Between these the field is an open lattice, the crossings pinned by rosettes, and on the median longitudinal line two floral medallions which enclose small flying bats. The whole in ruby and other gem tones on a ground of soft and delicate sky-blue.

*[Each] length, 70 inches; width, 22 inches*

211. PAIR CRIMSON BROCADE WALL HANGINGS *Ch'ien-lung*

80. In design similar to the preceding set of six, the colors in this pair being largely ruby, emerald and light turquoise, on a ground of dull golden-yellow.

*Length, 70 inches; width, 21½ inches*

212. TIBETAN EMBROIDERY PANEL *Ch'ien-lung*

15. Ornamentation, detached units of complex floral design, in quiet colors, on a crimson ground.

*Length, 7 feet 3 inches; width, 4 feet 8 inches*

213. CHINESE BROCADE STRIP *Ch'ien-lung*

25. Patterned in a variety of parallelograms and rosettes on a broadly latticed ground, the whole in quiet colors of a pleasing variety.

*Length, 6 feet 10 inches; width, 28 inches*

214. CHINESE BROCADE HANGING *K'ang-hsi*

40. Pattern a rich and elaborate lotus scroll in red and two tones of blue, with old-gold, on a light olive ground. Three borders at the ends.

*Length, 74 inches; width, 58 inches*

---

---

Kindly read Conditions of Sale printed in forepart of Catalogue

---

---

215. CHINESE BROCADE TABLE COVER Ch'ien-lung

25.— Silver-blue ground with a rich adornment in peony pattern, worked in ruby, pale topaz and a luminous sky-blue. Numerous borders of fret and floral scroll. Wide edge-border of deep blue silk.

Length, 75 inches; width, 39½ inches

216. PAIR CHINESE BROCADE PANELS Ch'ien-lung

80.— Rich brocade carrying a decoration of open lattice design with floral details and symbolic bats. At the ends panels enclosing dogs-Fu and a Shou medallion. The whole in various harmonious colors on a green ground.

Length, 70½ inches; width, [each] 22 inches

217. CHINESE SILK CRÊPE HANGING Circa, 1800

30.— Decoration, pines and blossoming plum trees, birds on the wing, and graceful ladies in a garden, in soft colors on a dark blue ground, with a deep bar of green across the top.

Length, 70½ inches; width, [each] 22 inches

218. CHINESE EMBROIDERY WALL HANGING Ch'ien-lung

15.— Lustrous *bleu-de-ciel* ground, embroidered in rich and brilliant colors with floral sprays, flying phoenixes, a *kylin* and the dragon-horse.

Length, 77 inches; width, 70 inches

219. CHINESE EMBROIDERED FOUR-FOLD SCREEN Ming

60.— Songbirds are perched and flying among blossoming branches of trees and shrubs, and a heron wades in the water below, all embroidered in brilliant light colors on white silk ground. At the top of each panel a poem signed with seals.

Height, 76½ inches; panel width, 18½ inches

[See illustration]

220. CHINESE DAMASK WALL PANEL Ch'ien-lung

27.50.— "Karako" design of the "hundred boys" amid flowers and conventional figures, mainly in quiet neutral colors, with the boys' heads outstanding in silvery white. Fret and other conventional borders cross the top and bottom of the panel.

Height, 6 feet 7 inches; width, 4 feet 10 inches





No. 219. CHINESE EMBROIDERED FOUR-FOLD SCREEN



---

---

*Kindly read Conditions of Sale printed in forepart of Catalogue*

---

---

221. CAUCASIAN WOOLEN WALL HANGING *XVIII Century*

35.— Patterned in chains of hexagonal figures enclosing latch-hook designs, effected principally in red, green, blue and white. Three borders at sides and six at ends; one end fringed.

*Length, 102 inches; width, 52 inches*

222. CHINESE EMBROIDERED FOUR-FOLD SCREEN *Ming*

180.— Songbirds perched in blossoming trees, with larger birds in evidence, among them a heron, worked in brilliant silks of many colors on a silken ground. On each panel a poem with seals.

*Height, 74½ inches; panel width, 18¾ inches*

223. CHINESE GREEN DAMASK LONG STRIP *Ch'ien-lung*

35.— Ornamentation of figures and flowers in emerald within a ground of pale old-gold. Five borders at one end.

*Length, 84 inches; width, 54 inches*

224. MONGOLIAN SILK CARPET *XVI Century*

50.— Field patterned in quadrilateral sections of rich sapphire-blue, pale gold, light turquoise-blue and apricot ground colors, each individually decorated with peach, pomegranate, chrysanthemum or other floral or fruit design of harmonious coloring. At either end a conventional border and a wide band of mixed color.

*Length, 6 feet 6 inches; width, 4 feet 7 inches*

225. CAUCASIAN WOOLEN FLOOR COVERING *XVIII Century*

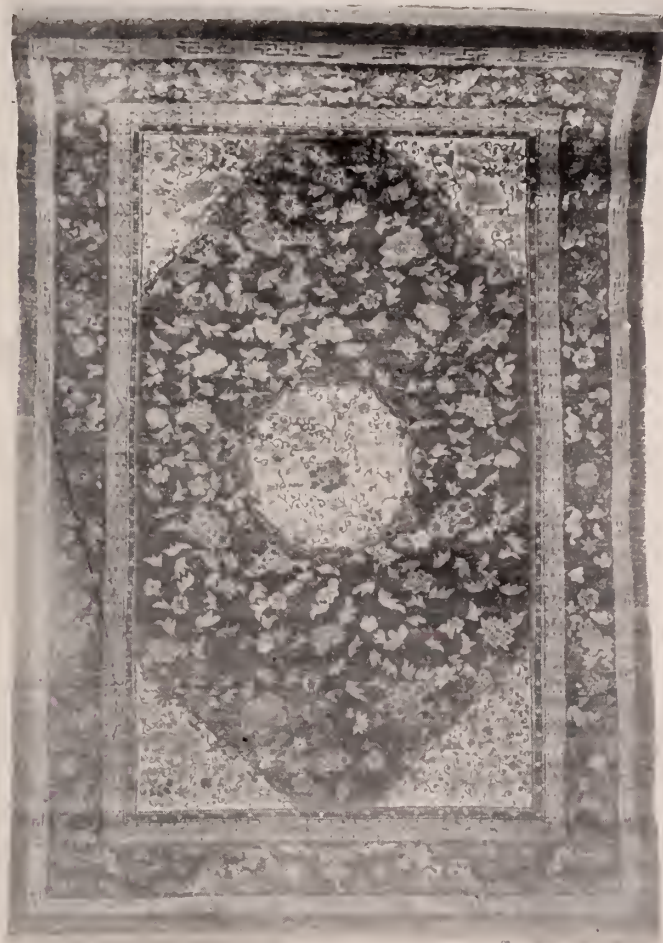
40.— Thin loose texture, the field of grayish turquoise tone supporting highly conventionalized geometric medallions in light and dark colors, besides conventional floral figures. Conventional border, varying in its circuit of the rug.

*Length, 12 feet; width, 4 feet 10 inches*

226. CAUCASIAN WOOLEN FLOOR COVERING *XVIII Century*

150.— Field of a quiet turquoise-blue, with formal indentions in rose from the sides, the deep ends being occupied by broad transverse stripes, of varied colors and exhibiting sundry designs.

*Length, 140 inches; width, 64 inches*



227. CHINESE IMPERIAL SILK RUG

*K'ang-hsi*

1850. Golden-yellow field with corners of rich sapphire-blue, and a central medallion of similar hue, the remaining expansive space patterned in sapphire- and turquoise-blue and a light shade of golden-yellow with a fine floral scroll. Numerous borders of various conventional designs.

*Length, 11 feet 9 inches; width, 8 feet 10 inches*

[See illustration]

228. CAUCASIAN WOOLEN RUG XVIII Century

35. Oblong field of wine-red ground, displaying conventional devices in light and dark colors, the field enclosed by a turquoise-blue border exhibiting minor ornamentation. Beyond the border the wine-red of the field is resumed, implanted with mixed medallions.

*Length, 59 inches; width, 43 inches*

229. VELVET PRAYER RUG Persian, XVIII Century

35. Mihrab of wine-red ground supporting three coniform trees in emerald-green. At upper corners geometrical figures on a dark blue ground. At the sides conventional borders.

*Length, 57 inches; width, 42½ inches*

230. TWO MONGOLIAN FLOOR COVERINGS XVIII Century

30. Dull red ground, with decoration in slightly more intense red, involving phoenixes flying in one rug about a phoenix medallion and in the other about a vase. Fret and floral scroll borders.

*Length, 80 inches; width, 60 inches*

*Length, 76 inches; width, 53 inches*

231. SICILIAN WOOLEN TABLE COVER XVIII Century

35. Patterned in quadrilateral sections enclosing small diamonds, the whole effected in ruby, blue, yellow and green.

*Length, 76 inches; width, 75 inches*

232. SICILIAN WOOLEN TABLE COVER XVIII Century

35. Embroidered decoration of sundry conventional geometric designs effected in squares in light and dark colors on a dark reddish ground. Ends fringed.

*Length, 75 inches; width, 73 inches*

233. SICILIAN WOOLEN TABLE COVER XVIII Century

30. In the field a lattice decoration of latch-hook design, effected in red, dark blue and green on a white ground. Border of quadrilateral figures of kindred design.

*Length, 80 inches; width, 69 inches*

234. SICILIAN BROCADE WALL HANGING XVIII Century

30. Adornment in narrow longitudinal stripes with small designs in various colors on grounds of crimson, white and dark blue.

*Length, 90 inches; width, 52 inches*

235. LONG DAMASK STRIP

*Asia Minor, XVIII Century*

20. Patterned in a series of longitudinal stripes displaying crude ornamentation, the principal colors red, yellow and a bluish-black.

*Length, 156 inches; width, 16½ inches*



236. EMBROIDERED DAMASK PIANO COVER

*Spanish, about 1770*

70. Ribbed white round, richly embroidered with baskets and large branches of flowers of many colors. Bordered with silk fringe.

*Length, 8 feet; width, 7 feet 3 inches*

[See illustration]

237. SPANISH EMBROIDERY TABLE STRIP

*Third Quarter XVIII Century*

1750. Graceful sprays of blossoms embroidered in a variety of brilliant colors on a brocade ground of soft white.

*Length, 8 feet 2 inches; width, 21 inches*



*Kindly read Conditions of Sale printed in forepart of Catalogue*

238. CHINESE DAMASK STRIP *Ch'ien-lung*

40. Design and colors of lovely quality, representing the fruits of the abundances with generous rose and blue notes on a shimmering ground of pale gray-blue.

*Length, 86 inches; width, 12 inches*

239. SPANISH SILK EMBROIDERY PANEL *About 1770*

15. Ivory-white damask ground, embroidered with brilliant silks of many colors in designs of leaf sprays and bouquets of flowers.

*Length, 125 inches; width, 90 inches*

240. SPANISH DAMASK TABLE COVER *XVIII Century*

15. Broad longitudinal stripes decorated with floral scrolls in blue on a white ground, alternating with narrower stripes carrying a somewhat different floral decoration on a smaller scale.

*Length, 7 feet 10 inches; width, 5 feet*

241. SPANISH EMBROIDERY STRIP *Third Quarter XVIII Century*

15. Blossoms large and small and of many varieties are embroidered in soft neutral colors on a mellow *écru* ground carrying brocade patterns.

*Length, 8 feet 8 inches; width, 24½ inches*

242. SPANISH EMBROIDERY WALL HANGING *Third Quarter XVIII Century*

17.50 Brilliant display of flower clusters in strong colors on a white brocade ground.

*Length, 8 feet; width, 38½ inches*

243. SILK EMBROIDERED COPE *Late XVIII Century*

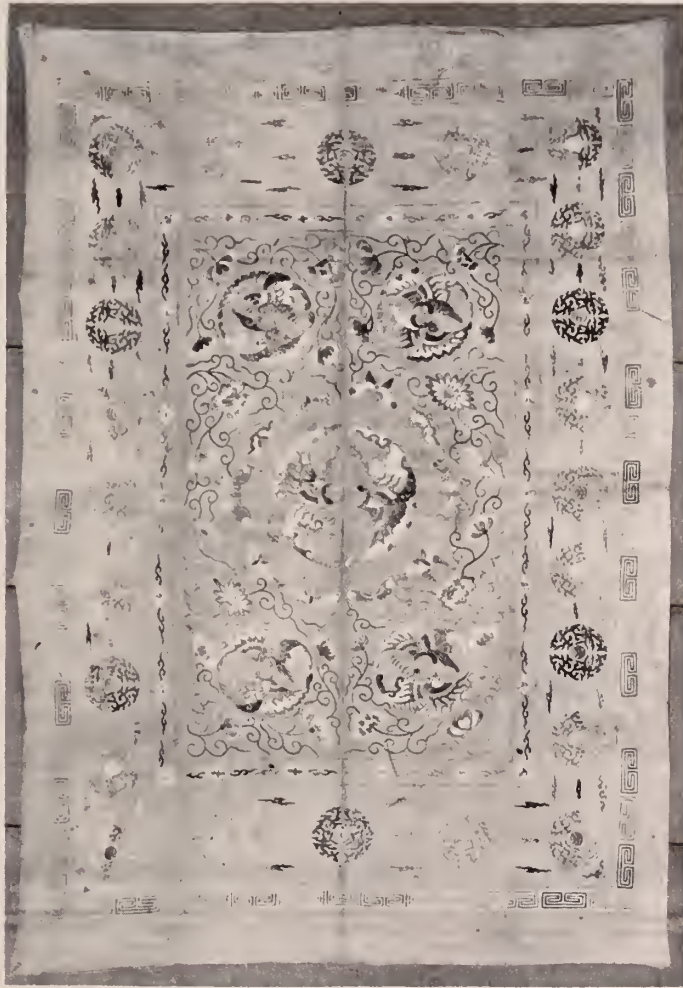
20. Brocaded design involving a pleasing variety of floral motives wrought in softly brilliant colors on a ribbed ground.

244. CHINESE EMBROIDERED WALL HANGING *Ch'ien-lung*

35. Lambrequin exhibiting large peony scrolls and flying bats and butterflies, embroidered in sapphire- and turquoise-blue and silvery white on a rich peach-pink ground. At the top a wide border embroidered in peony design on a light emerald ground.

*Length, 8 feet 2 inches; width, 7 feet*





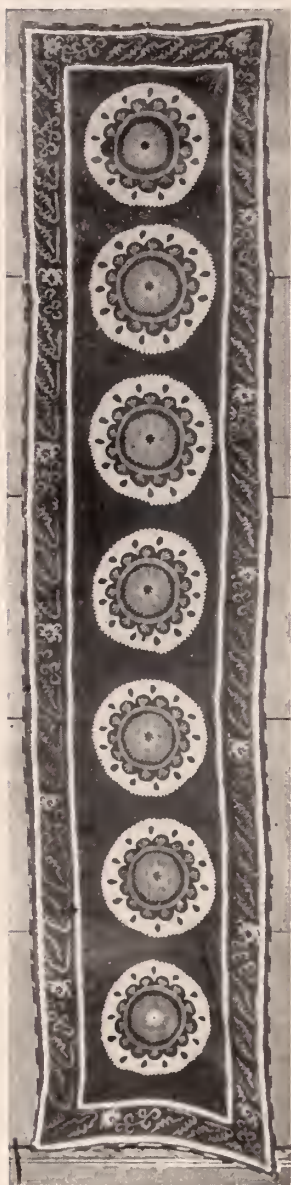
245. MONGOLIAN EMBROIDERED WALL HANGING

*Ch'ien-lung*

40. Embroidered in rug design, with the field bounded by borders of medallions and fret, the field itself being ornamented with butterfly medallions, butterflies and floral sprays, all in rich colors on a light fawn ground.

*Length, 8 feet 4 inches; width, 5 feet 10 inches*

[See illustration]



No. 249

246. CHINESE BROCADE TABLE COVER

*Ch'ien-lung*

40. Lattice design of varied foliated medallions, with dragons, on a ground of swastika fret, the colors green, white, blue and old-gold with a generous use of rich apricot.

*Length, 101 inches; width, 42½ inches*

247. CHINESE BROCADE LONG STRIP

*Ch'ien-lung*

65. Rich conventional floral illumination in soft colors on a dark blue ground.

*Length, 9 feet 2 inches; width, 28 inches*

[See illustration]

248. CHINESE BROCADE PANEL *Ch'ien-lung*

40. Decorated with a complex lattice pattern exhibiting both floral and geometrical elements, in soft neutral colors with a reticent embellishment in gold.

*Length, 10 feet 4 inches; width, 27 inches*

[See illustration]

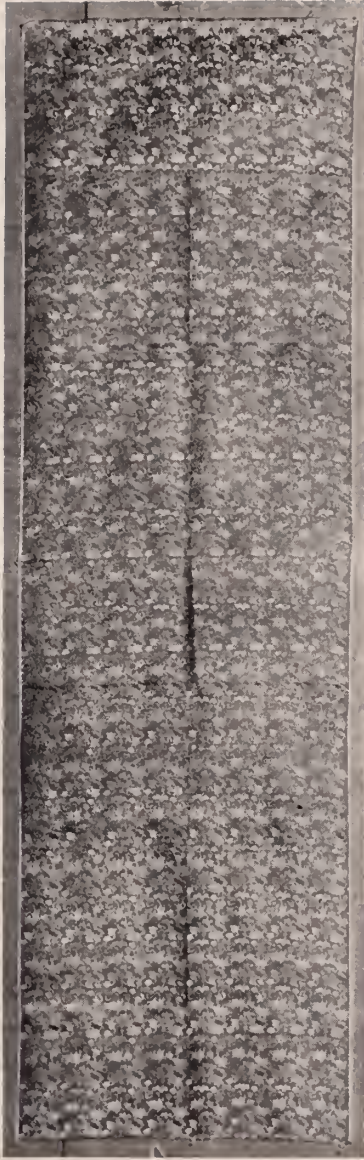
249. BOKHARA EMBROIDERY LONG PANEL

*XVIII Century*

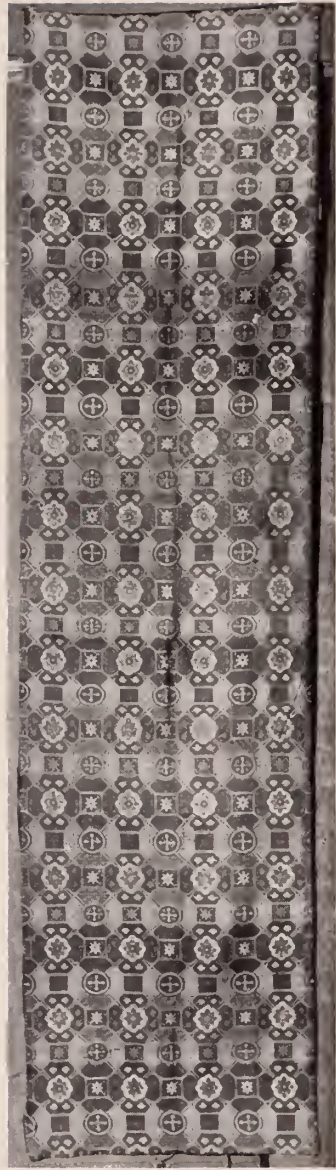
42.50 Embroidered with formal borders of conventional design, defining the parallelogram of the field, which is adorned with seven medallions of composite form, in quiet colors on a ground of wine-red.

*Length, 11 feet; width, 30 inches*

[See illustration]



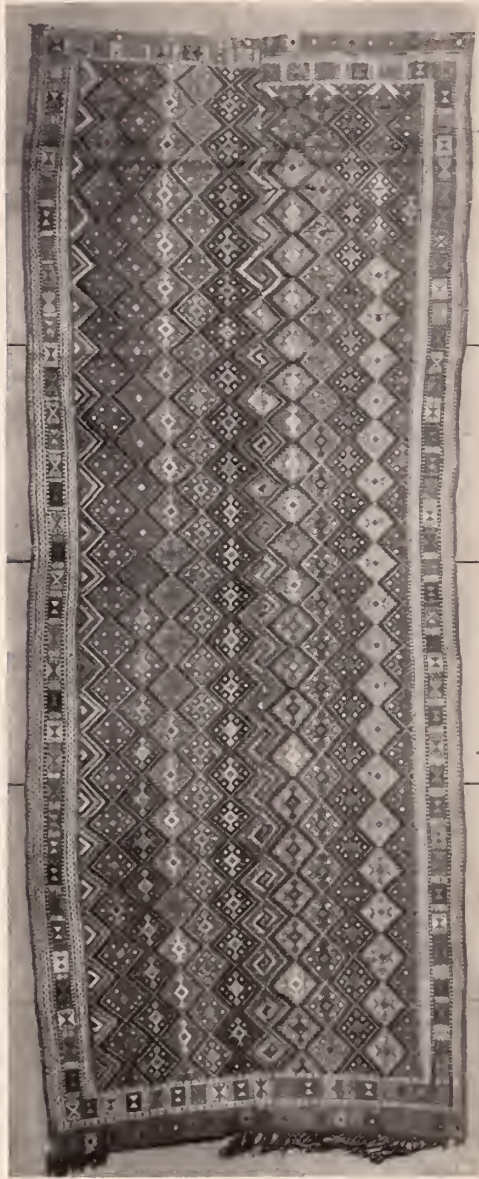
No. 247



No. 248

No. 247. CHINESE BROCADE LONG STRIP  
No. 248. CHINESE BROCADE PANEL





No. 251

250. BROCADE PORTIÈRE

*Dutch, XVIII Century*

15.— Reddish-brown ground, ornamented with longitudinal stripes and floral embroideries.

*Length, 9 feet 4 inches; width, 4 feet*

251. CAUCASIAN WOOLEN  
TABLE COVER

*XVIII Century*

35.— Decorated in closely related parallel lines of diamond-shaped figures, respectively decorated with smaller devices. Three conventional borders. The whole in light and dark blue, red, green and white. Fringe at one end.

*Length, 128 inches; width, 52 inches*

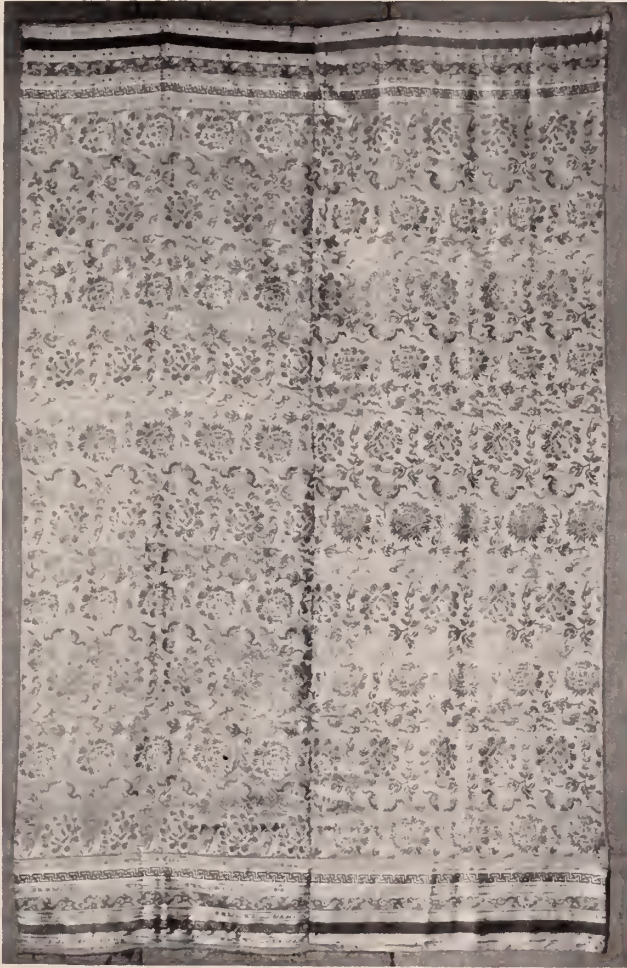
[See illustration]

252. CHINESE EMBROIDERY

HANGING *K'ang-hsi*

35.— Ornamentation, many imperial dragons above sea waves, embroidered in turquoise-blue and sapphire-blue, ruby, silver-white and old-gold on a golden ground.

*Length, 11 feet 6 inches; width, 31 inches*



253. CHINESE DAMASK WALL HANGING

*Ch'ien-lung*

50. Embellished with a rich peony scroll pattern, intermingled with butterflies, wrought in a garden of full-bodied colors on a delectable ground of soft écru. At either end seven borders of floral, dragon and fret scroll in harmonious colors on similar ground.

*Length, 11 feet 6 inches; width, 4 feet 9 inches*

[See illustration]



---

---

*Kindly read Conditions of Sale printed in forepart of Catalogue*

---

---

254. CHINESE EMBROIDERED HANGING *K'ang-hsi*

40. Embroidered in luminous colors on an old-gold ground with imperial dragons and conventional clouds.

*Length, 11 feet 4 inches; width, 30 inches*

255. CHINESE EMBROIDERED HANGING *K'ang-hsi*

150. Innumerable phoenixes flying among large peony sprays are embroidered in turquoise-blue, rose-red, silvery white and other hues, with gold enhancement, on a brilliant ground of rich sapphire-blue. Wide border of bats flying among conventional clouds, in brilliant colors on a ground of golden-yellow, between narrower borders of dragons and keyfret in gold threaded on sky blue.

*Length, 11 feet 8 inches; width, 8 feet 8 inches*

256. CHINESE BLACK BROCADE LONG STRIP *Ming*

45. Black ground with large conventional lotus ornamentation in sapphire, silver-white, rose, apricot and peach tones, enhanced with gold. [Edges slightly torn.]

*Length, 19 feet 6 inches; width, 16 inches*

257. PERSIAN WOOLEN TABLE COVER *XVIII Century*

225. Field of mille-fleurs design with implanted medallions and corners, in many soft colors. Wide conventional border all around; fringed ends.

*Length, 15 feet; width, 6 feet 8 inches*

258. JAPANESE HARIMAZE TWO-FOLD SCREEN *XVII Century*

50. A "furosaki" or tea ceremony screen, adorned with various panels of embroidery and brocade, in numerous colors and gold and displaying many designs.

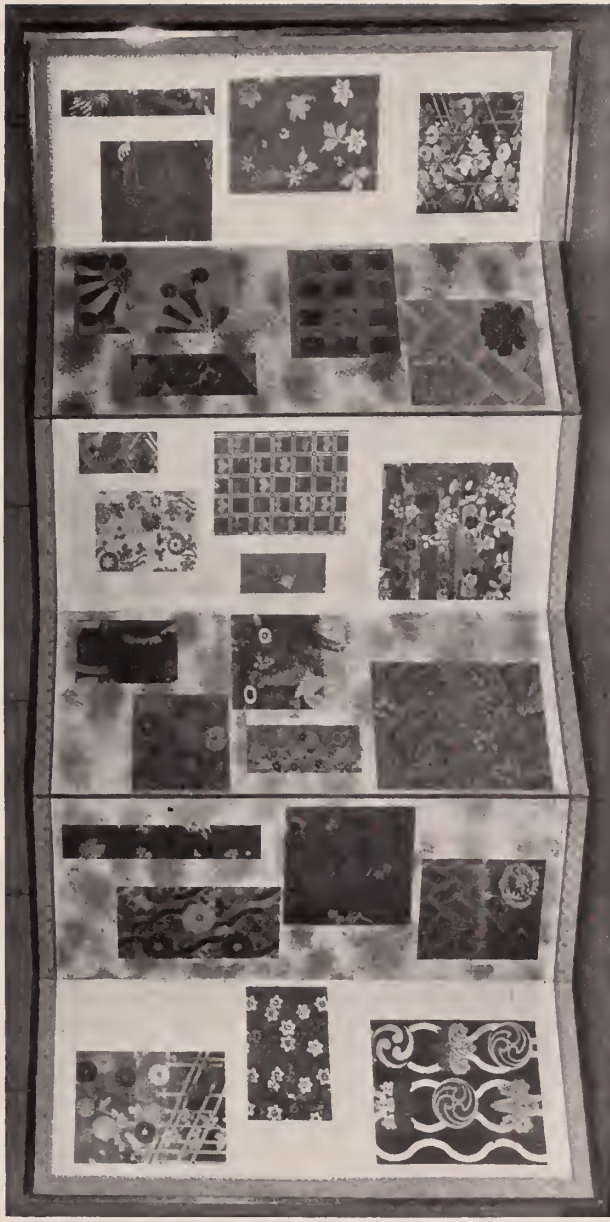
*Height, 30 inches; panel width, 35½ inches*

259. PAIR JAPANESE HARIMAZE SIX-FOLD SCREENS *XVII Century*

340. "Kara ori" panels of numerous and varied brocades, the designs floral and geometrical, naturalistic and conventional, and including designs of birds, in a variety of rich and most brilliant colors.

*Height, 67 inches; panel width, 24½ inches*

[See illustration]



No. 259. PAIR JAPANESE HARIMAZE SIX-FOLD SCREENS

---

---

*Kindly read Conditions of Sale printed in forepart of Catalogue*

---

---

260. JAPANESE EMBROIDERED FOUR-FOLD SCREEN *Ch'ien-lung*

100. Each panel brilliantly embroidered in rich colors with expansive sprays of peonies and other flowers, and with pheasants in pairs, on a fluctuating rose ground.

*Height, 58½ inches; panel width, 19 inches*

261. JAPANESE FOUR-FOLD SCREEN *XVII Century*

65. "Nishiki" brocade, presenting affluent peony sprays in soft and rich colors on light grounds.

*Height, 47 inches; panel width, 21 inches*

262. JAPANESE HARIMAZE SIX-FOLD SCREEN *XVII Century*

75. Panels in "kara ori" design, the various embroideries in brilliant silks of many colors and numerous floral patterns—an engaging medley of rich decorative motives.

*Height, 32 inches; panel width, 24¾ inches*

263. PAIR JAPANESE HARIMAZE SIX-FOLD SCREENS *XVII Century*

220. Panels in "kara ori" design, the numerous and varied embroideries including birds and flowers, fans, and lattices, and the grounds as varied.

*Height, 60 inches; panel width, 18 inches*

264. JAPANESE TWO-FOLD TAPESTRY SCREEN IN RED LACQUER FRAME *Ch'ien-lung*

55. Each panel presenting a four-clawed dragon facing the observer, above a line of waves, and the upper section of the panel showing conventional adornment. Carved and gilded borders.

*Height, 36 inches; panel width, 20 inches*

[END OF SALE]

APPRAISALS FOR  
UNITED STATES & STATE TAX  
INSURANCE & OTHER PURPOSES  
CATALOGUES OF PRIVATE  
COLLECTIONS



*THE American Art Association, Inc. will furnish appraisements, made by experts under its direct supervision, of art and literary property and all personal effects, in the settlement of estates, for inheritance tax, insurance and other purposes. ¶ The Association is prepared to supplement this appraisal work by making catalogues of private libraries, of the contents of homes or of entire estates, such catalogues to be modeled after the fine and intelligently produced sales' catalogues of the Association. ¶ Upon request the Association will furnish the names of many trust and insurance companies, executors, administrators, trustees, attorneys and private individuals for whom the Association has made appraisements which not only have been entirely satisfactory to them, but have been accepted by the United States Estate Tax Bureau, the State Tax Commission and others in interest.*

‘ ‘ ‘

AMERICAN ART ASSOCIATION · INC  
*Madison Avenue at 57th Street*  
NEW YORK





COMPOSITION, PRESSWORK  
AND BINDING BY



















THE METROPOLITAN  
MUSEUM OF ART

*Thomas J. Watson Library*

